

TECHNICAL MANUAL

ORGANIZATIONAL, DIRECT SUPPORT, AND  
GENERAL SUPPORT MAINTENANCE  
REPAIR PARTS AND SPECIAL TOOLS LIST  
FOR

OSCILLOSCOPE AN / **USM-488**  
(NSN 6625=01 -1 87-7847)

Technical Manual  
 No. 11-6625-3135-24P

HEADQUARTERS  
 DEPARTMENT OF THE ARMY  
 Washington, DC, 12 September 1985

**ORGANIZATIONAL, DIRECT SUPPORT, AND  
 GENERAL SUPPORT MAINTENANCE  
 REPAIR PARTS AND SPECIAL TOOLS LIST  
 FOR  
 OSCILLOSCOPE AN/USM-488  
 (NSN 6625-01-187-7847)**

*Current as of 1 April 1985*

---

REPORTING OF ERRORS AND RECOMMENDING IMPROVEMENTS

You can help improve this manual. If you find any mistakes or if you know of a way to improve the procedures, please let us know. Mail your letter, DA Form 2028 (Recommended Changes to Publications and Blank Forms), or DA Form 2028-2 located in the back of this manual direct to: Commander, US Army Communications-Electronics Command and Fort Monmouth, ATTN: AMSEL-ME-MP, Fort Monmouth, NJ 07703-5007. A reply will be furnished to you.

TABLE OF CONTENTS

		Page	Illus Figure
Section	I. Introduction . . . . .		
	II. Repair parts list . . . . .		
Group	00 Oscilloscope AN/USM-488 . . . . .	1-1	1
	01 Circuit card assembly A1 . . . . .	2-1	2
Section	III. Special tools list (not applicable)		
	IV. National stock number and part number index . . . . .	I-1	

# SECTION I INTRODUCTION

---

## 1. Scope

This manual lists and authorizes spares and repair parts; special tools; special test, measurement, and diagnostic equipment (TMDE), and other special support equipment required for performance of organizational, direct support, and general support maintenance of the AN/USM-488. It authorizes the requisitioning, issue, and disposition of spares, repair parts and special tools as indicated by the source, maintenance and recoverability (SMR) codes.

## 2. General

This Repair Parts and Special Tools List is divided into the following sections:

*a. Section II. Repair Parts List.* A list of spares and repair parts authorized by this RPSTL for use in the performance of maintenance. The list also includes parts which must be removed for replacement of the authorized parts. Parts lists are composed of functional groups in ascending numeric sequence, with the parts in each group listed in ascending item number sequence. Figure numbers are listed directly beneath the group header.

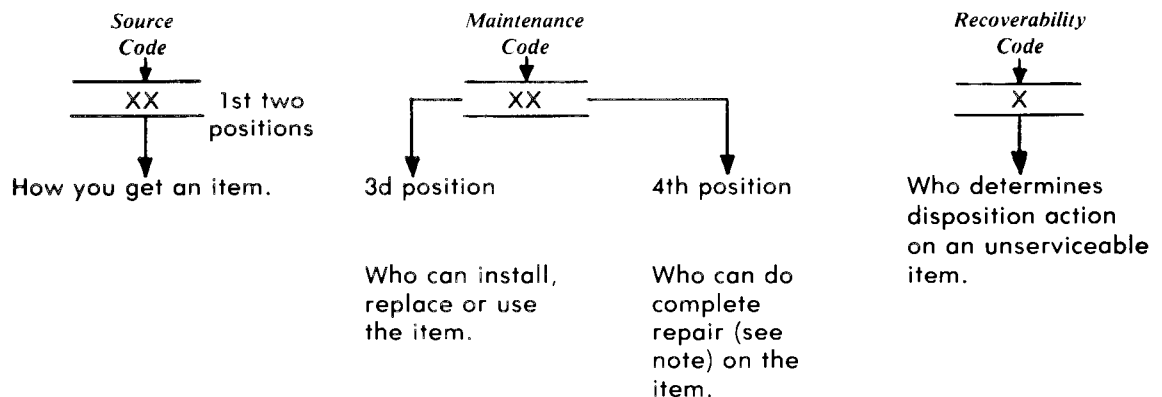
*b. Section III. Special Tools List. Not applicable.*

*c. Section IV. National Stock Number and Part Number Index.* A list, in National item identification number (NIIN) sequence, of all National stock numbered items appearing in the listings, followed by a list in alphabetical sequence of all part numbers appearing in the listings. National stock numbers and part numbers are cross referenced to each illustration figure and item number appearance.

## 3. Explanation of Columns (Section II and III)

*a. Item No. (Column (1)).* Indicates the number used to identify items called out in the illustration.

*b. SMR Code (Column (2)).* The source, maintenance, and recoverability (SMR) code is a five-position code containing supply/requisitioning information, maintenance category authorization criteria, and disposition instruction, as shown in the following breakout:



**NOTE**

Complete repair: Maintenance capacity, capability, and authority to perform all corrective maintenance tasks of the "Repair" function in a use/user environment in order to restore serviceability to a failed item.

(1) *Source Code*. The source code tells you how to get an item needed for maintenance, repair, or overhaul of an end item/equipment. Explanations of source codes follows:

<i>Code</i>	<i>Explanation</i>
PA PB PC PD PE PF PG	Stocked items; use the applicable NSN to request/requisition items with these source codes. They are authorized to the category indicated by the code entered in the third position of the SMR code.
	<p><b>NOTE</b></p> <p>Items coded PC are subject to deterioration.</p>

KD KF KB	Items with these codes are not to be requested/requisitioned individually. They are part of a kit which is authorized to the maintenance category indicated in the third position of the SMR code. The complete kit must be requisitioned and applied.
----------------	--

MO — Made at org/ AVUM category MF — Made at DS/ AVUM category MH — Made at GS category ML — Made at Spec- ialized Repair Activity (SRA) MD — Made at Depot	Items with these codes are not to be requested/requisitioned individually. They must be made from bulk material which is identified by the part number in the description and usable on code (UOC) column and listed in the Bulk Material group of the repair parts list. If the item is authorized to you by the third position code of the SMR code, but the source code indicates it is made at a higher category, order the item from the higher category of maintenance.
--	---

AO — Assembled by org/ AVUM category AF — Assembled by DS/ AVIM category AH — Assembled by GS category AL — Assembled by SRA AD — Assembled by Depot	Items with these codes are not to be requested/requisitioned individually. The parts that make up the assembled item must be requisitioned or fabricated and assembled at the category of maintenance indicated by the source code. If the disposition code of the SMR code authorizes you to replace the item, but the source code indicates the item is assembled at a higher category, order the item from the higher category of maintenance.
---	---

- XA - Do not requisition an "XA" coded item. Order its next higher assembly.
- XB - If an "XB" item is not available from salvage, order it using the FSCM and part number given.
- XC - Installation drawing, diagram, instruction sheet, field service drawing, that is identified by manufacturers part number.
- XD - Item is not stocked. Order an "XD" coded item through normal supply channels using the FSCM and part number given, if no NSN is available.

**NOTE**

Cannibalization or controlled exchange, when authorized, may be used as a source of supply for items with the above source codes, except for those source coded "XA" or those aircraft support items restricted by requirements of AR 750-1.

(2) *Maintenance Code.* Maintenance codes tell you the category of maintenance authorized to USE and REPAIR support items. The maintenance codes are entered in the third and fourth positions of the SMR code as follows:

(a) The maintenance code entered in the third position tells you the lowest maintenance category authorized to remove, replace, and use an item. The maintenance code entered in the third position will indicate authorization to one of the following categories of maintenance.

<i>Code</i>	<i>Application/Explanation</i>
C	- Crew or operator maintenance done within organizational or aviation maintenance.
O	- Organizational or aviation unit category can remove, replace, and use the item.
F	- Direct support or aviation intermediate category can remove, replace, and use the item.
H	- General support category can remove, replace, and use the item.
L	- Specialized repair activity can remove, replace, and use the item.
D	- Depot category can remove, replace, and use the item.

(b) The maintenance code entered in the fourth position tells whether or not the item is to be repaired and identifies the lowest maintenance category with the capability to do complete repair (i. e., perform all authorized repair functions). This position will contain one of the following maintenance codes:

**NOTE**

Some limited repair may be done on the item at a lower category of maintenance, if authorized by the Maintenance Allocation Chart (MAC) and SMR codes.

<i>Code</i>	<i>Application/Explanation</i>
O	- Organizational or aviation unit is the lowest category that can do complete repair of the item.
F	- Direct support or aviation intermediate is the lowest category that can do complete repair of the item.
H	- General support is the lowest category that can do complete repair of the item.
L	- Specialized repair activity (designate the specialized repair activity) is the lowest category that can do complete repair of the item.
D	- Depot is the lowest category that can do complete repair of the item.
z	- Nonreparable. No repair is authorized.
B	- No repair is authorized. (No parts or special tools are authorized for the maintenance of a "B" coded item. ) However, the item may be reconditioned by adjusting, lubricating, etc., at the user category.

(3) *Recoverability Code.* Recoverability codes are assigned to items to indicate the disposition action on unserviceable items. The recoverability code is entered in the fifth position of the SMR Code as follows:

*Recoverability  
codes*

*Application/Explanation*

- Z - Nonreparable item. When unserviceable, condemn and dispose of the item at the category of maintenance shown in the third position of SMR Code.
- O - Repairable item. When uneconomically repairable, condemn and dispose of the item at organizational or aviation unit category.
- F - Repairable item. When uneconomically repairable, condemn and dispose of the item at the direct support or aviation intermediate category.
- H - Repairable item. When uneconomically repairable, condemn and dispose of the item at general support category.
- D - Repairable item. When beyond lower level repair capability, return to depot. Condemnation and disposal of item not authorized below depot category.
- L - Repairable item. Condemnation and disposal not authorized below specialized repair activity (SRA).
- A - Item requires special handling or condemnation procedures because of specific reasons (e.g., precious metal content, high dollar value, critical material, or hazardous material). Refer to appropriate manuals/directives for specific instructions.

c. *FSCM (Column (3))*. The Federal Supply Code for Manufacturer (FSCM) is a 5-digit numeric code which is used to identify the manufacturer, distributor, or Government agency, etc., that supplies the item.

d. *Part Number (Column (4))*. Indicates the primary number used by the manufacturer (individual, company, firm, corporation, or Government activity), which controls the design and characteristics of the item by means of its engineering drawings, specifications, standards, and inspection requirements to identify an item or range of items.

**NOTE**

When you use a NSN to requisition an item, the item you receive may have a different part number from the part ordered.

e. *Description and Usable on Code (UOC)(Column (5))*. This column includes the following information.

(1) The Federal item name and, when required, a minimum description to identify the item.

(2) The statement "END OF FIGURE" appears just below the last item description in Column (5) for a given figure in both section II and section III.

f. *Qty (Column (6))*. Indicates the quantity of the item used in the breakout shown on the illustration figure, which is prepared for a functional group, subfunctional group, or an assembly, A "V" appearing in this column in lieu of a quantity indicates that the quantity is variable and the quantity may vary from application to application.

4. Explanation of Columns (Section IV)

a. *National Stock Number (NSN) Index*.

(1) *Stock number column*. This column lists the NSN by National item identification number (NIIN) sequence. The NIIN consists of the last nine digits of the NSN. When using this column to locate an item, ignore the first four digits of the NSN. When requisitioning items use the complete NSN (13 digits).

(2) *Fig. column*. This column lists the number of the figure where the item is identified/located. The illustrations are in numerical sequence in sections II and III.

(3) *Item column.* The item number identifies the item associated with the figure listed in the adjacent Fig. column. This item is also identified by the NSN listed on the same line.

*b. Part Number Index.* Part numbers in this index are listed by part number in ascending alphameric sequence.

(1) *FSCM column.* This column lists the Federal supply code for manufacturer (FSCM).

(2) *Part number column.* This column indicates the part number assigned to the item.

(3) *Stock number column.* This column lists the National stock number for the associated part number and manufacturer identified in the part number and FSCM columns to the left.

(4) *Fig. column.* This column lists the number of the figure where the item is identified/located in sections II and III.

(5) *Item column.* The item number is that number assigned to the item as it appears in the figure referenced in the adjacent figure number column.

## 5. Special Information

*a. Associated Publications.* The publications listed below pertain to the AN/USM-488 and its components:

TM 11-6625-3135-12, Oscilloscope AN/USM-488

TM 11-6625-3135-40, Oscilloscope AN/USM-488

*b. National Stock Numbers.* National stock numbers (NSN'S) that are missing from P source coded items have been applied for and will be added to this TM by future change/revision when they are entered in the Army Master Data File (AMDF). Until the NSN'S are established and published, submit exception requisitions to: Commander, US Army Communications-Electronics Command and Fort Monmouth, ATTN: AMSEL-MM, Fort Monmouth, NJ 07703-5006 for the part required to support your equipment.

## 6. How to Locate Repair Parts

*a. When National stock number or part number is not known.*

(1) *First.* Using the table of contents, determine the assembly group or subassembly group to which the item belongs. This is necessary since figures are prepared for assembly groups and subassembly groups, and listings are divided into the same groups.

(2) *Second.* Find the figure covering the assembly group or subassembly group to which the item belongs.

(3) *Third.* Identify the item on the figure and note the item number.

(4) *Fourth.* Refer to the Repair Parts List for the figure to find the part number for the item number noted on the figure.

(5) *Fifth.* Refer to the Part Number Index to find the NSN, if assigned.

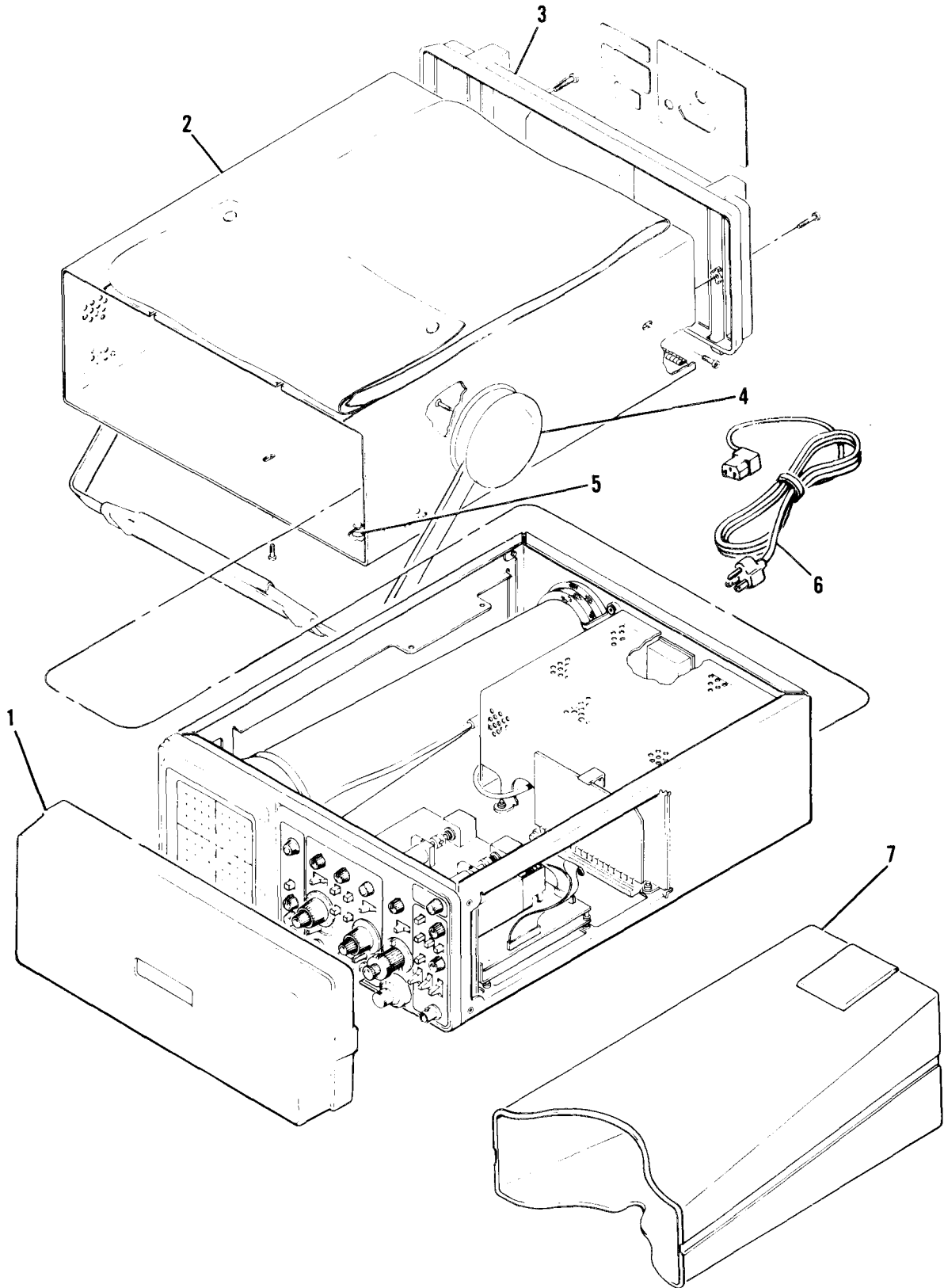
*b. When National stock number or part number is known.*

(1) *First.* Using the Index of National stock numbers and part numbers, find the pertinent National stock number or part number. The NSN index is in National item identification number (NIIN) sequence (para 4a(1)). The part numbers in the part number index are listed in ascending alphameric sequence (para 4b). Both indexes cross-reference you to the illustration figure and item number of the item you are looking for.

(2) *Second.* After finding the figure and item number, verify that the item is the one you're looking for, then locate the item number in the repair parts list for the figure.

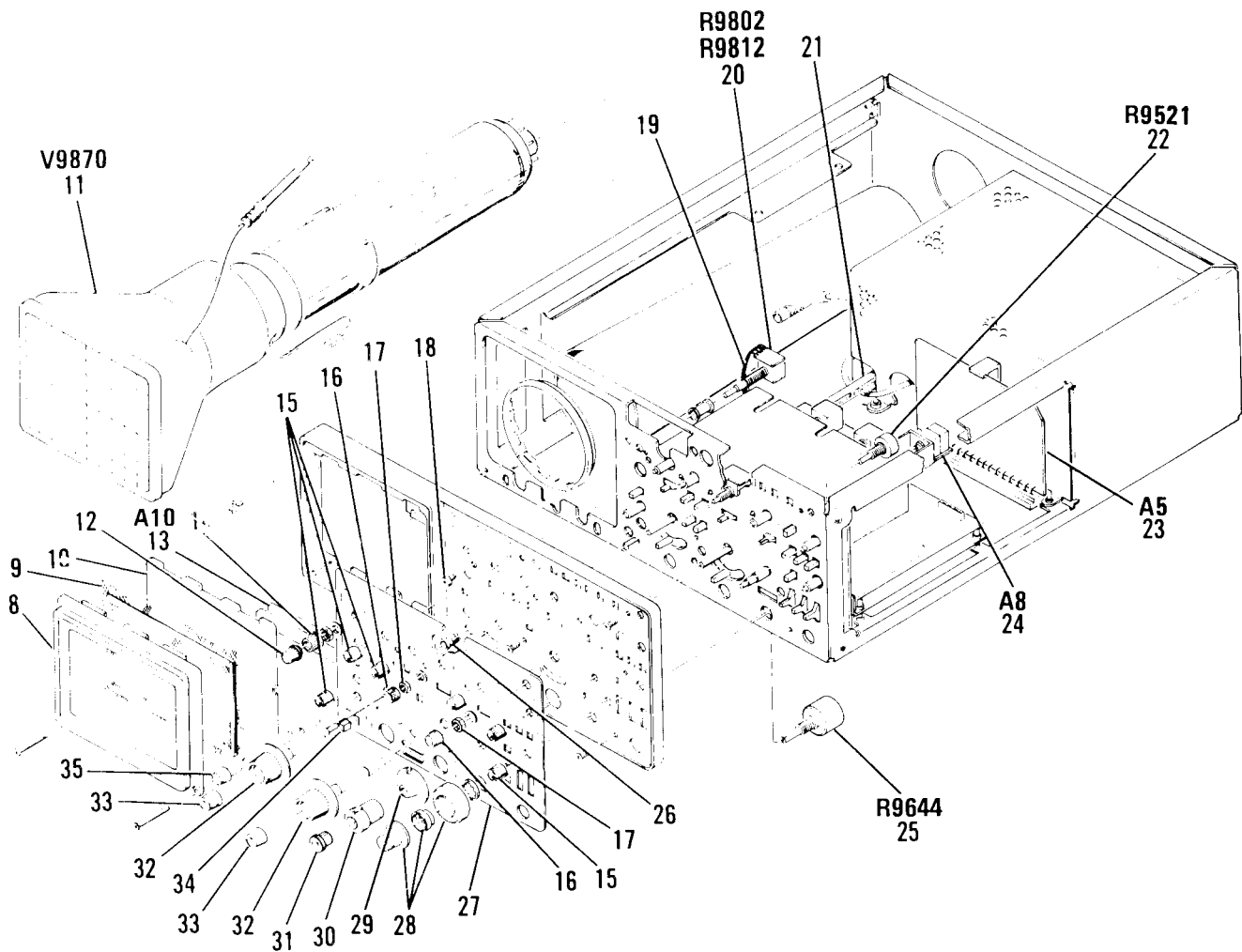
## **7. Abbreviations**

Not applicable.



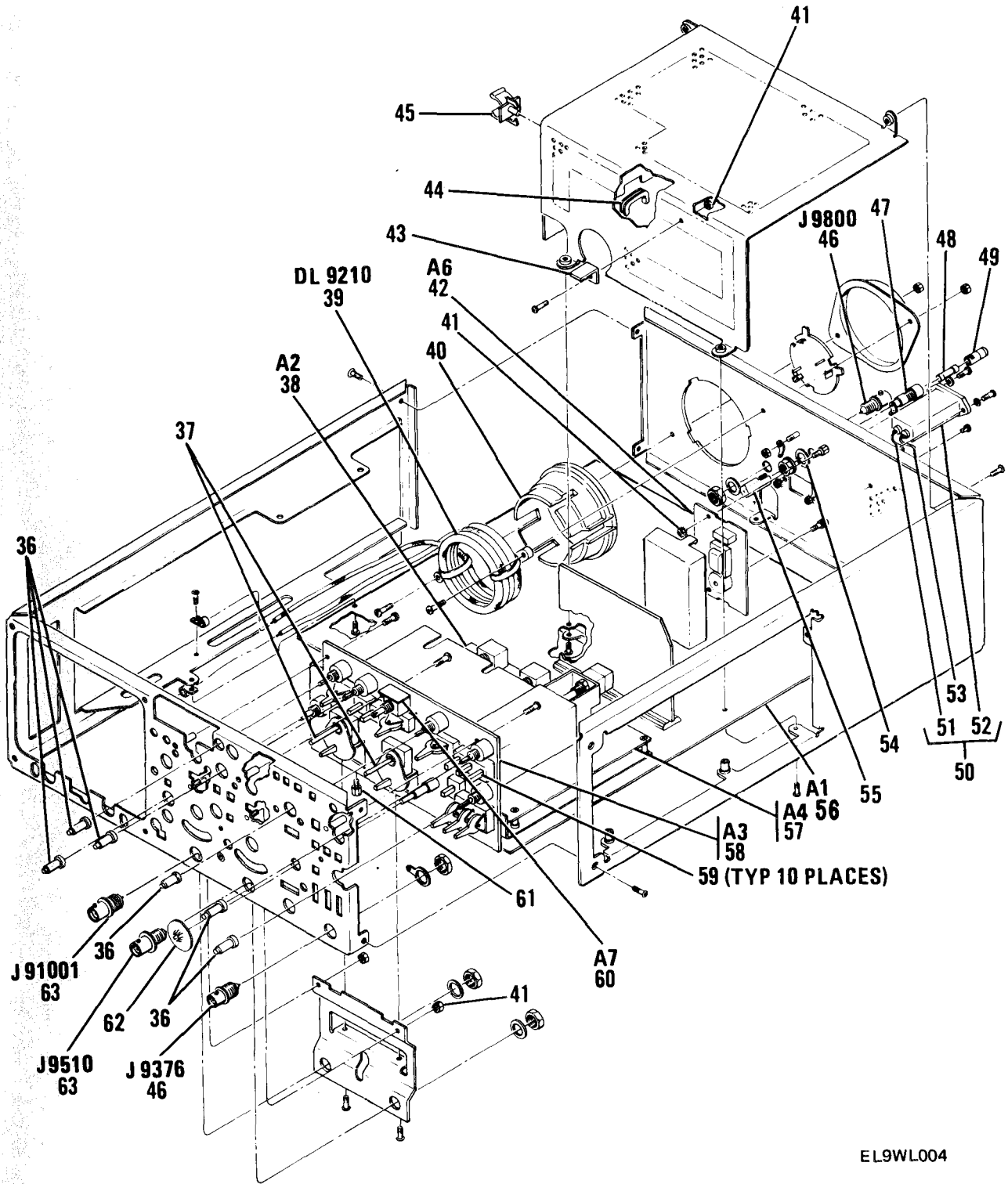
EL9WL002

Figure 1. Oscilloscope AN/USM-488 Exploded View (Sheet 1 of 4)



EL9WL003

Figure 1. Oscilloscope AN/USM-488 Exploded View (Sheet 2 of 4)



EL9WL004

Figure 1. Oscilloscope AN/USM-488 Exploded View (Sheet 3 of 4)

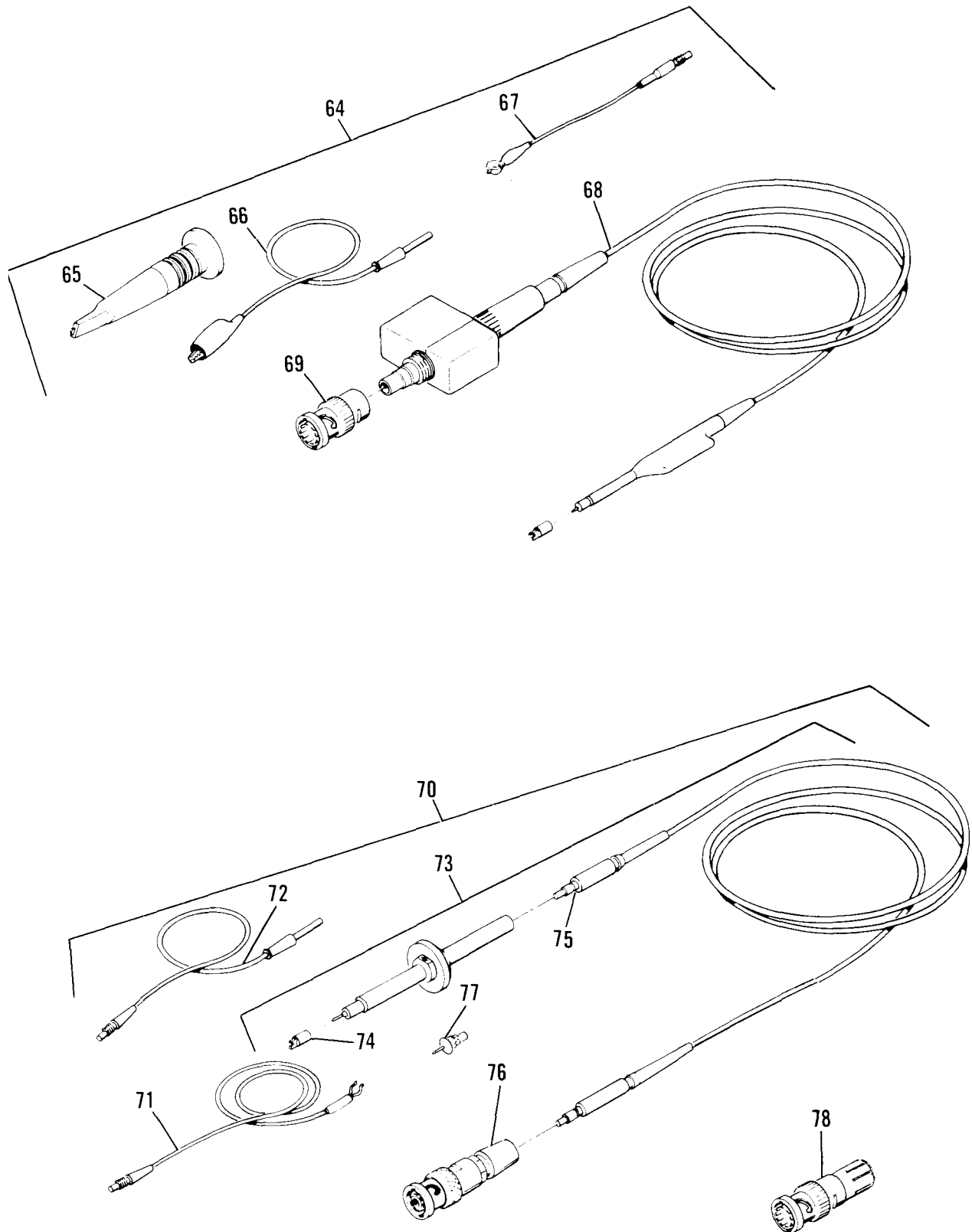


Figure 1. Oscilloscope AN/USM-488 Exploded View (Sheet 4 of 4)

(1) ITEM NO	(2) SMR CODE	(3) FSCM	(4) PART NUMBER	(5) DESCRIPTION AND USABLE ON CODE (UOC)	(6) QTY
GROUP 00 OSCILLOSCOPE AN/USM-488					
FIG 1					
1	PAHZZ	80009	200-2520-00	COVER,OSCILLOSCOPE	1
2	PAHZZ	80009	390-0790-11	CABINET, OSCILLOSCOP	1
3	PAHZZ	80009	200-2538-00	COVER,REAR	1
4	PAHZZ	80009	367-0289-00	HANDLE,CARRYING	1
5	PAHZZ	80009	348-0659-01	FOOT,CABINET	2
6	PAHZZ	16428	CH8352	CABLE ASSY,PWR	1
7	PAHZZ	80009	016-0566-00	VISOR,CATHODE RAY T	1
8	PAHZZ	80009	426-1765-02	FRAME	1
9	PAHZZ	80009	378-0237-00	FILTER,MESH	1
10	PAHZZ	80009	337-2775-01	SHIELD,IMPLOSION	1
11	PAHZZ	80009	154-0861-00	ELECTRON TUBE	1
12	PAOZZ	80009	366-1391-03	KNOB	1
13	PAHZZ	80009	670-8418-00	CIRCUIT CARD ASSEMB	1
14	PAOZZ	80009	366-2146-03	KNOB	1
15	PAOZZ	80009	366-2049-01	KNOB	6
16	PAOZZ	80009	366-1146-00	KNOB	2
17	PAHZZ	73743	2X-20319-402	NUT,PLAIN,HEXAGON	1
18	PAHZZ	80009	136-0628-00	JACK,TIP	1
19	PAHZZ	80009	175-6140-00	CABLE ASSEMBLY,SPEC	1
20	PAHZZ	80009	311-2177-02	RESISTOR,VARIABLE N	1
21	PAHZZ	80009	384-1576-01	EXTENSION SHAFT	1
22	PAHZZ	12697	CM41773	RESISTOR,VARIABLE,N	1
23	PAHZZ	80009	670-8407-00	CIRCUIT CARD ASSEMB	1
24	PAHZZ	80009	670-8819-00	CIRCUIT CARD ASSEMB	1
25	PAHZZ	80009	311-1183-02	RESISTOR,VARIABLE W	1
26	PAHZZ	80009	358-0550-00	BUSHING,SHAFT	1
27	PAHZZ	8009	333-3109-00	PANEL,BLANK	1
28	PAHZZ	05129	461-S-70	DIAL,CONTROL	1
29	PAHZZ	80009	366-1850-00	KNOB	1
30	PAOZZ	80009	366-1840-03	KNOB	1
31	PAOZZ	80009	366-2052-01	KNOB	1
32	PAOZZ	80009	366-2148-01	KNOB	2
33	PAOZZ	80009	366-1031-03	KNOB	2
34	PAHZZ	80009	366-1480-03	PUSH BUTTON	1
35	PAHZZ	80009	384-1575-00	EXTENSION SHAFT	1
36	PAOZZ	80009	377-0512-00	INSERT,KNOB	6
37	PAHZZ	80009	214-3375-00	SWITCH,LEVER	2
38	PAHZZ	80009	672-0111-00	CIRCUIT CARD ASSEMB	1
39	PAHZZ	80009	119-1515-00	DELAY LINE	1
40	PAHZZ	80009	200-2519-00	CAP,CIRCUIT SOCKET	1
41	PAHZZ	78189	211-041800-00	NUT,PLAIN,ASSEMBLED	5
42	PAHZZ	80009	670-7615-00	CIRCUIT CARD ASSEMB	1
43	PAHZZ	80009	344-0132-00	CLIP,SPRING TENSION	1
44	PAHZZ	80009	348-0555-00	GROMMET,PLASTIC	1
45	PAHZZ	80009	344-0347-00	CLIP,ELECTRICAL	1
46	PAHZZ	13511	31-279	CONNECTOR,RECEPTACL	2
47	PAHZZ	80009	204-0833-00	FUSEHOLDER,EXTRACTO	1
48	PAOZZ	81349	F03B250V1A	FUSE,CARTRIDGE	2

(1) ITEM NO	(2) SMR CODE	(3) FSCM	(4) PART NUMBER	(5) DESCRIPTION AND USABLE ON CODE (UOC)	(6) QTY
49	PAHZZ	80009	200-2264-00	CAP,FUSEHOLDER	1
50	PAHZZ	80009	119-1788-00	LINE FILTER ASSEMBL	1
51	PAHZZ	80009	195-0389-00	LEAD,ELECTRICAL	1
52	PAHZZ	54583	ZUB2203-00	RADIO FREQUE	1
53	PAHZZ	80009	195-5499-00	LEAD,ELECTRICAL	1
54	PAHZZ	78189	1224-02	WASHER, LOCK	1
55	PAHZZ	80009	200-1388-03	COVER,FUSE	1
56	PBHHH	80009	670-8404-00	CIRCUIT CARD ASSEMB	1
57	PAHZZ	80009	670-8405-00	CIRCUIT CARD ASSEMB	1
58	PAHZZ	80009	670-8406-00	CIRCUIT CARD ASSEMB	1
59	PAHZZ	80009	366-2013-00	PUSH BUTTON	10
60	PAHZZ	80009	670-8444-00	CIRCUIT CARD ASSEMB	1
61	PAHZZ	80009	129-0999-00	SPACER,POST	2
62	PAHZZ	80009	131-2844-00	CONTACT,ELECTRICAL	1
63	PAHZZ	77820	9663-1 NT-34	CONNECTOR	2
64	PAHZZ	80009	010-6122-01	PROBE,VOLTAGE	2
65	PAHZZ	80009	013-0107-04	TIP,PROBE	2
66	PAHZZ	80009	195-1870-00	LEAD,ELECTRICAL	2
67	PAHZZ	80009	195-6176-00	LEAD,ELECTRICAL	2
68	PAHZZ	80009	175-3217-00	CABLE ASSEMBLY,RADI	2
69	PAHZZ	95712	33600-1	SHELL,ELECTRICAL CO	2
70	PAHZZ	80009	010-6101-03	LEAD,TEST	1
71	PAHZZ	80009	175-0124-01	LEAD,ELECTRICAL	1
72	PAHZZ	80009	175-0125-01	LEAD,ELECTRICAL	1
73	PAOZZ	80009	010-6101-02	LEAD,TEST	1
74	PAOZZ	80009	015-0201-04	COVER,TEST PROD	1
75	PAHZZ	80009	175-1661-01	CABLE ASSEMBLY,RADI	1
76	PAOZZ	24931	28P224-1	PROBE SUBASSEMBLY	1
77	PAOZZ	80009	206-0191-03	TIP,TEST PROD	1
78	PAHZZ	95712	2048-2NT34	ADAPTER,CONN	1

END OF FIGURE



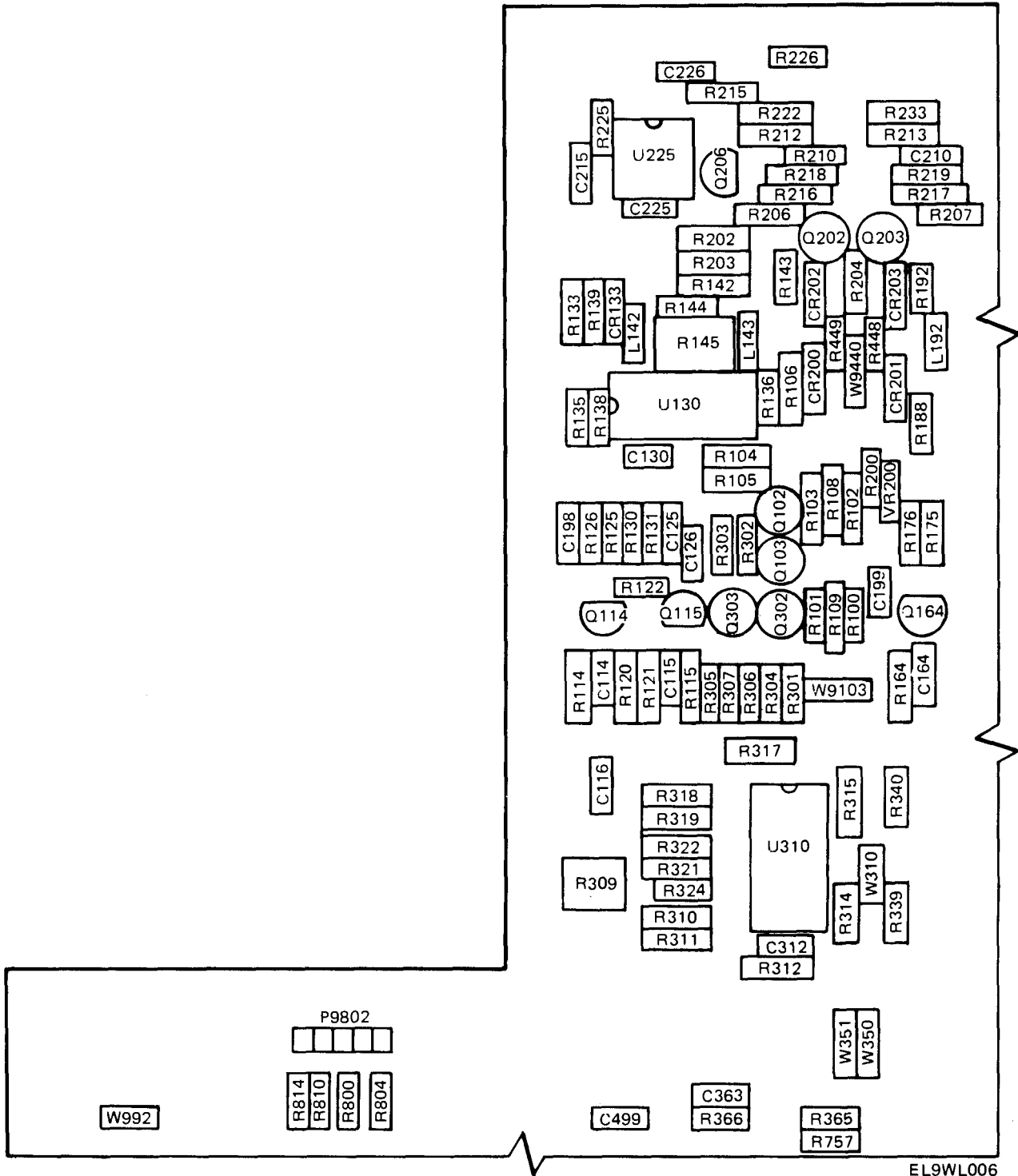
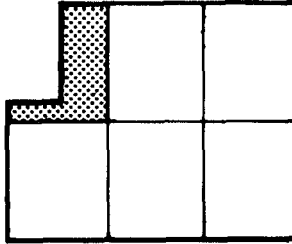
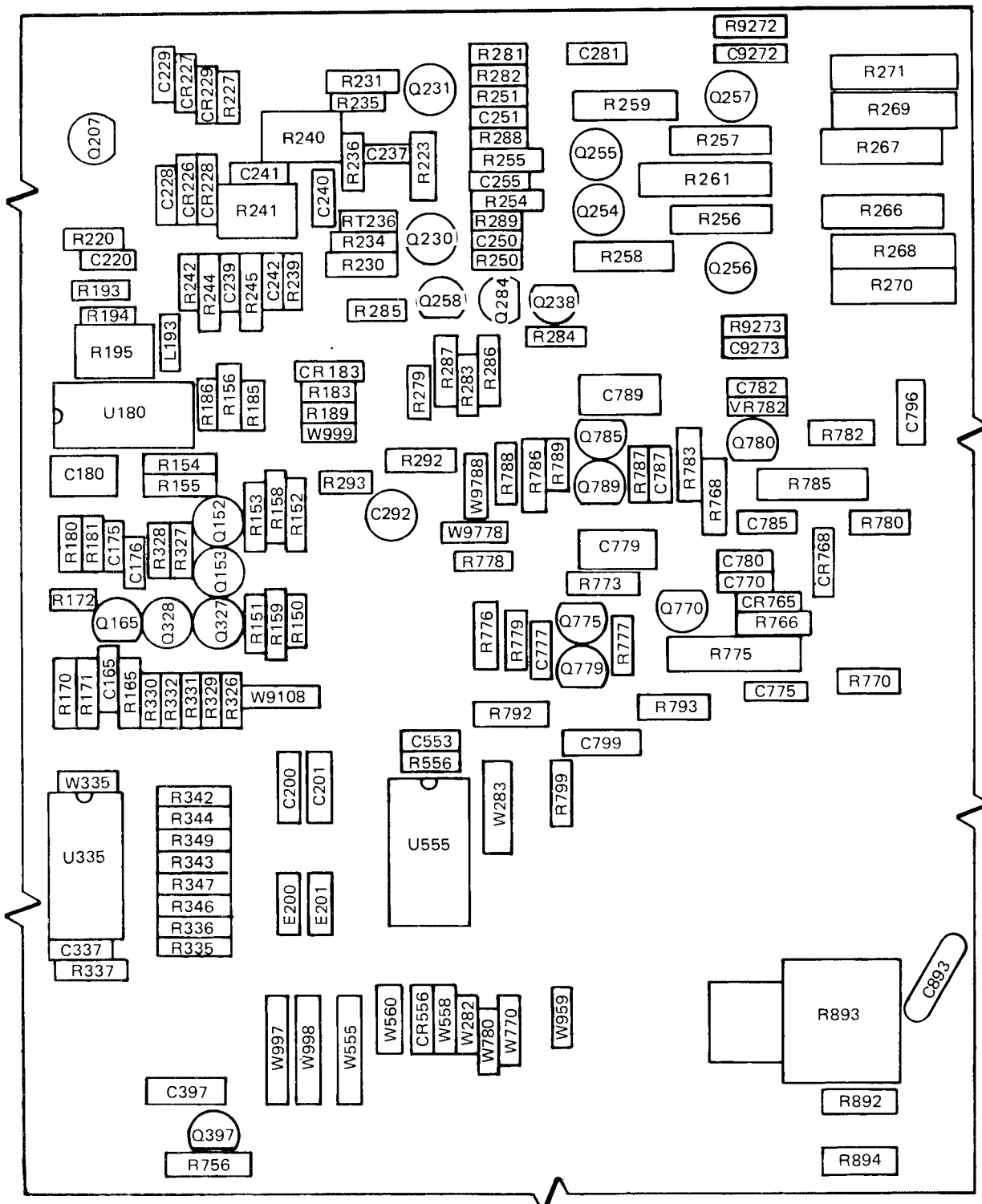
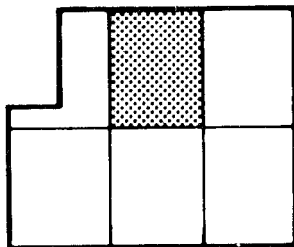


Figure 2. Circuit Card Assembly A1 (Sheet 1 of 11)

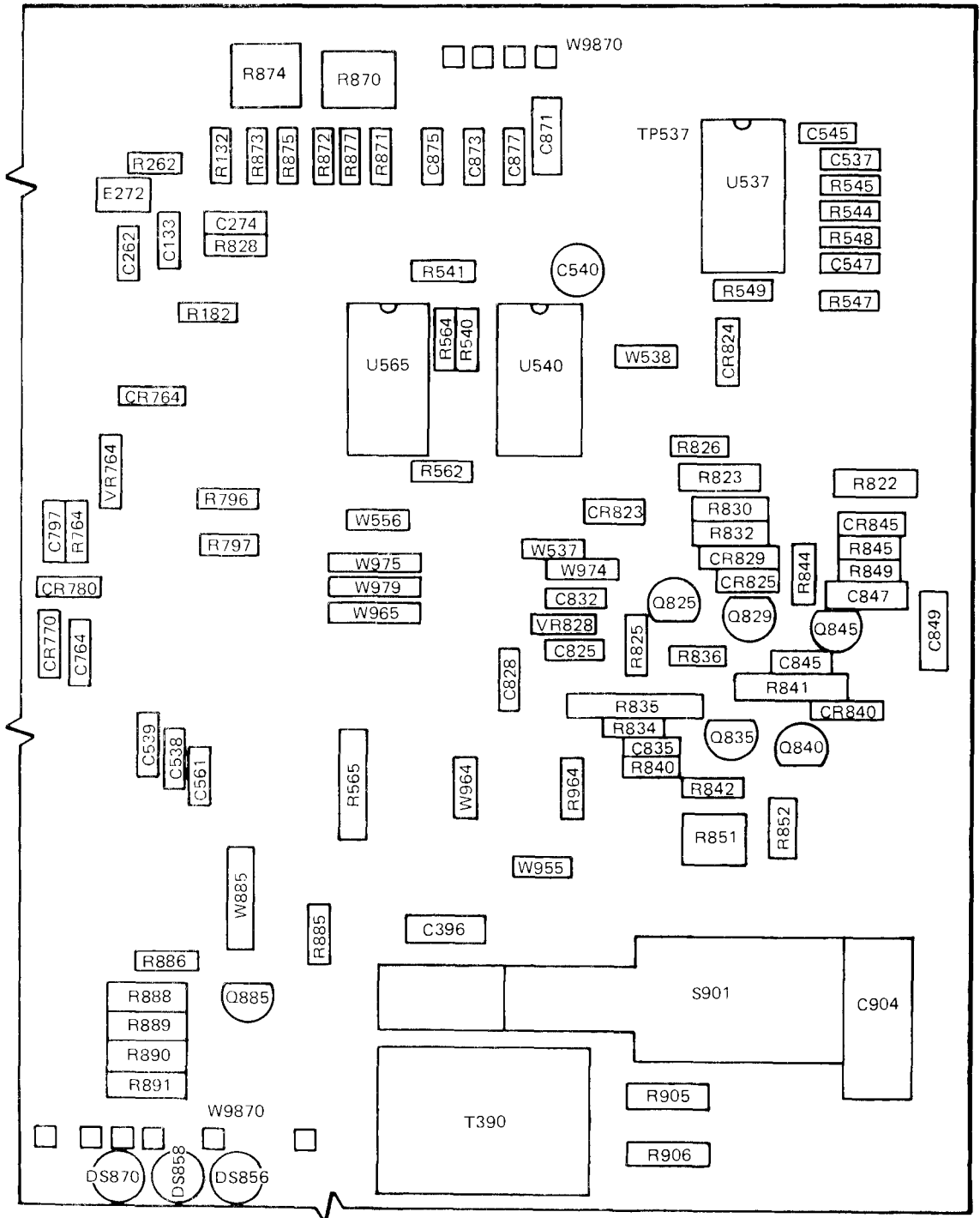
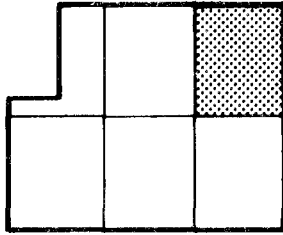




EL9WL008

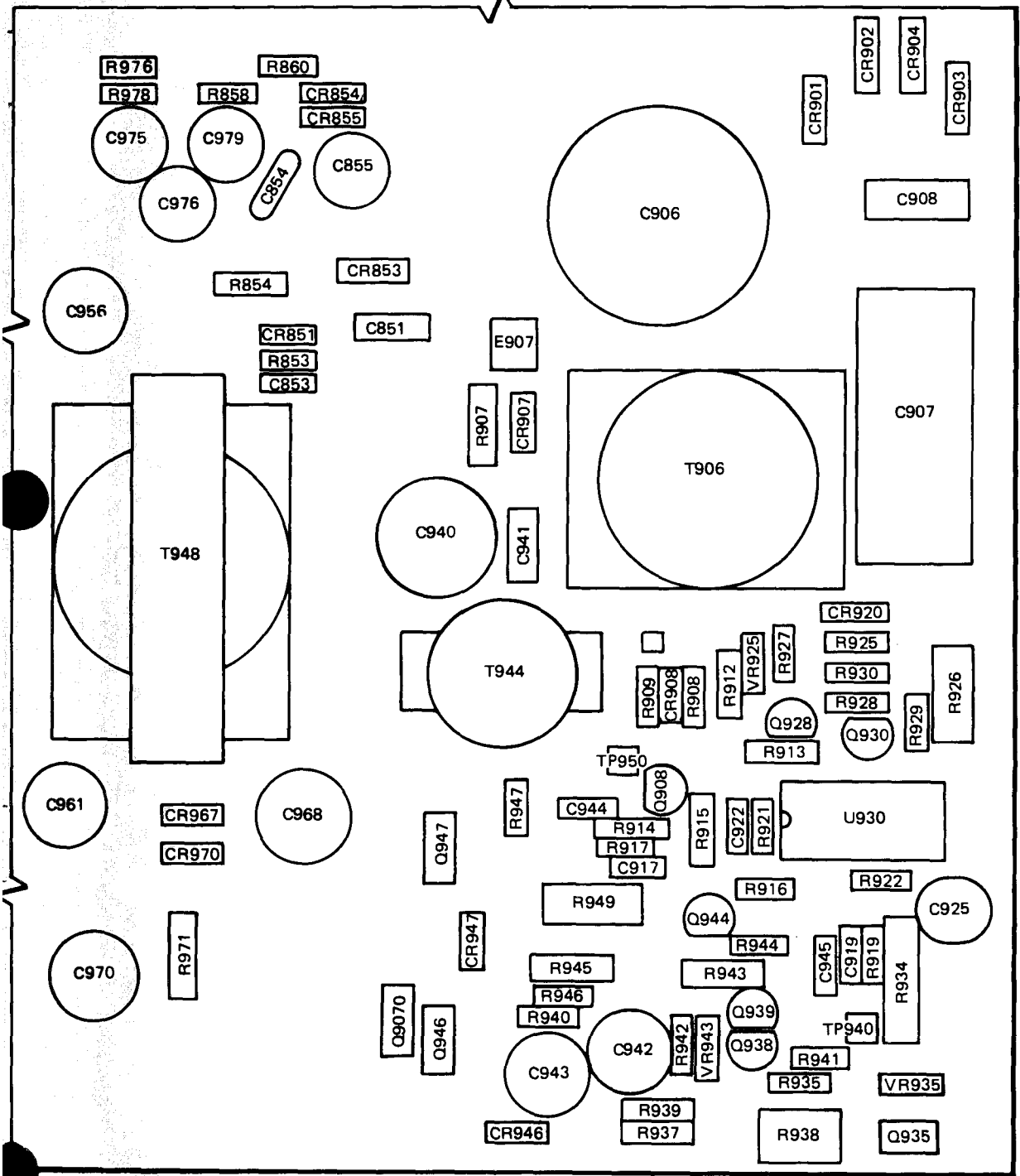
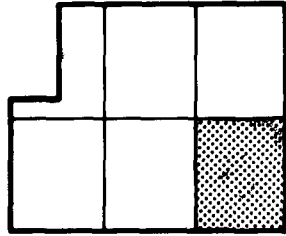
Figure 2. Circuit Card Assembly A1 (Sheet 3 of 11)





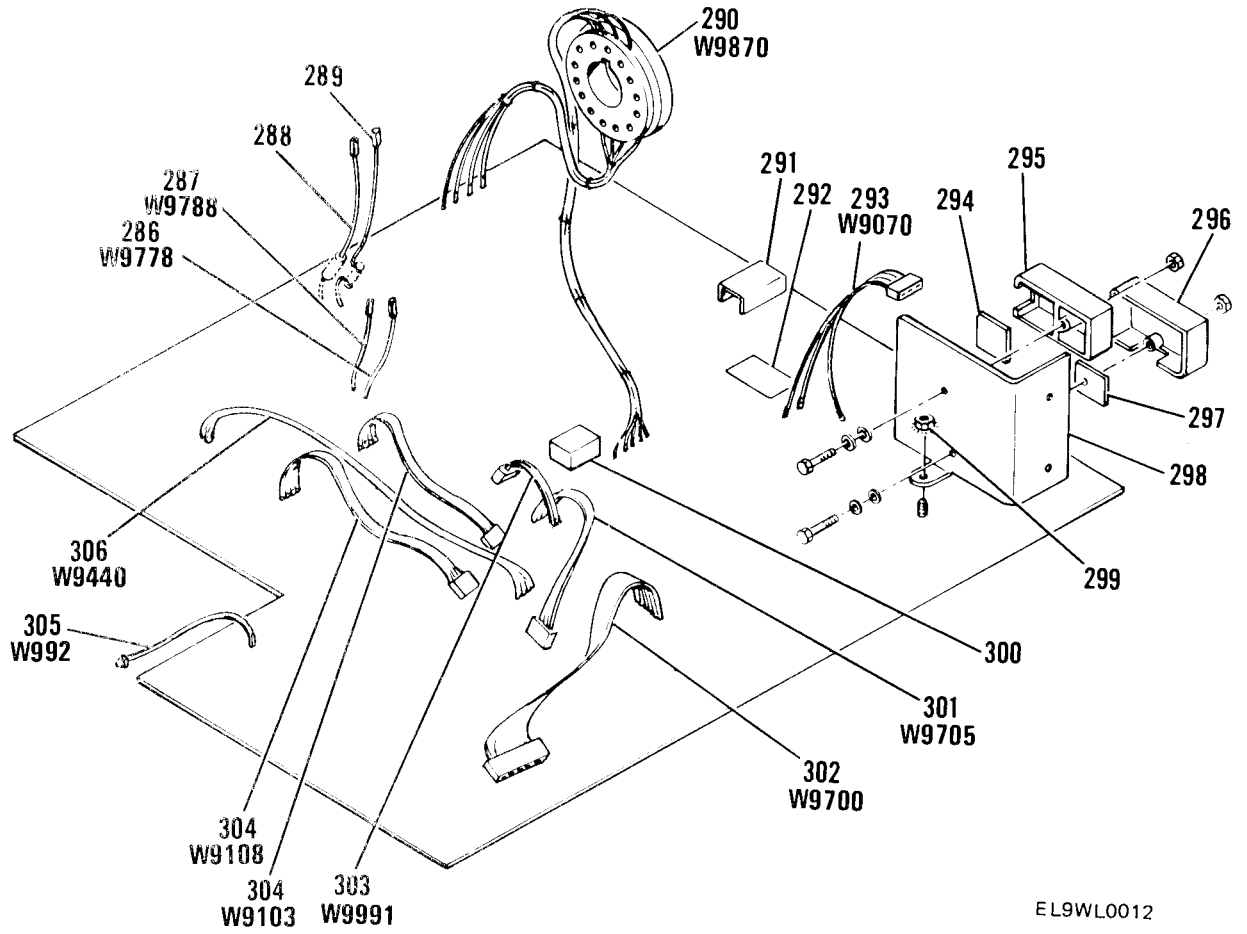
EL9WL010

Figure 2. Circuit Card Assembly A1 (Sheet 5 of 11)



EL9W0011

Figure 2. Circuit Card Assembly A1 (Sheet 6 of 11)



EL9WL0012

Figure 2. Circuit Card Assembly A1 (Sheet 7 of 11)

REFERENCE DESIGNATION-TO-ITEM NUMBER TABLE

REF DES	ITEM	REF DES	ITEM	REF DES	ITEM	REF DES	ITEM	REF DES	ITEM
A1C114	1	A1C409	22	A1C647	2	A1C945	17	A1CR764	51
A1C115	1	A1C410	23	A1C648	2	A1C954	47	A1CR765	51
A1C116	2	A1C414	24	A1C649	2	A1C956	48	A1CR768	51
A1C125	3	A1C415	24	A1C673	31	A1C960	49	A1CR770	51
A1C126	4	A1C418	2	A1C764	16	A1C961	49	A1CR780	51
A1C130	5	A1C419	25	A1C770	17	A1C962	49	A1CR805	51
A1C133	6	A1C420	16	A1C775	33	A1C963	49	A1CR818	51
A1C164	1	A1C421	16	A1C777	34	A1C968	49	A1CR820	51
A1C165	1	A1C451	3	A1C779	35	A1C970	49	A1CR823	51
A1C175	3	A1C453	2	A1C780	17	A1C975	39	A1CR824	51
A1C176	4	A1C454	17	A1C782	17	A1C976	39	A1CR825	51
A1C180	7	A1C459	2	A1C785	33	A1C979	39	A1CR829	51
A1C198	2	A1C460	26	A1C787	34	A1C9272	50	A1CR840	51
A1C199	2	A1C467	3	A1C789	35	A1C9273	50	A1CR845	51
A1C200	8	A1C469	3	A1C796	17	A1CR133	51	A1CR851	53
A1C1201	8	A1C473	2	A1C797	17	A1CR183	51	A1CR853	53
A1C210	9	A1C494	16	A1C799	36	A1CR200	51	A1CR854	53
A1C215	2	A1C499	16	A1C824	6	A1CR201	51	A1CR855	53
A1C220	3	A1C500	27	A1C825	1	A1CR202	51	A1CR901	54
A1C225	2	A1C501	24	A1C828	17	A1CR203	51	A1CR902	54
A1C226	2	A1C502	16	A1C832	17	A1CR226	51	A1CR903	54
A1C228	10	A1C503	17	A1C835	17	A1CR227	51	A1CR904	54
A1C229	10	A1C504	24	A1C845	34	A1CR228	51	A1CR907	55
A1C237	7	A1C505	28	A1C847	36	A1CR229	51	A1CR908	51
A1C239	11	A1C506	3	A1C849	36	A1CR372	51	A1CR920	56
A1C240	12	A1C507	18	A1C851	36	A1CR381	51	A1CR946	57
A1C241	13	A1C517	3	A1C853	37	A1CR393	51	A1CR947	57
A1C242	14	A1C518	29	A1C854	38	A1CR399	51	A1CR954	58
A1C250	15	A1C519	17	A1C855	39	A1CR405	51	A1CR955	58
A1C251	15	A1C520	24	A1C871	36	A1CR406	51	A1CR956	57
A1C255	2	A1C525	30	A1C873	17	A1CR409	51	A1CR957	57
A1C262	2	A1C527	31	A1C875	17	A1CR414	51	A1CR960	57
A1C274	16	A1C529	6	A1C877	17	A1CR415	51	A1CR961	57
A1C281	17	A1C531	16	A1C893	38	A1CR419	51	A1CR962	57
A1C292	18	A1C537	17	A1C904	40	A1CR467	51	A1CR963	57
A1C312	19	A1C538	2	A1C906	41	A1CR476	51	A1CR967	59
A1C337	19	A1C539	2	A1C907	42	A1CR477	51	A1CR970	59
A1C363	2	A1C540	18	A1C908	43	A1CR503	52	A1DS856	60
A1C369	2	A1C545	32	A1C917	14	A1CR508	51	A1DS858	60
A1C381	20	A1C547	1	A1C919	29	A1CR509	51	A1DS870	60
A1C389	16	A1C553	17	A1C922	17	A1CR514	51	A1DS9150	61
A1C390	2	A1C561	2	A1C925	44	A1CR518	51	A1E200	62
A1C392	2	A1C565	15	A1C940	45	A1CR529	51	A1E201	62
A1C396	21	A1C590	8	A1C941	36	A1CR551	51	A1E272	63
A1C397	16	A1C603	2	A1C942	46	A1CR556	51	A1E590	62
A1C402	2	A1C635	26	A1C943	46	A1CR583	51	A1E907	64
A1C406	2	A1C646	18	A1C944	28	A1CR712	51	A1J9400	65

EL9WL0013

Figure 2. Circuit Card Assembly A1 (Sheet 8 of 11)

REFERENCE DESIGNATION-TO-ITEM NUMBER TABLE

REF DES	ITEM	REF DES	ITEM	REF DES	ITEM	REF DES	ITEM	REF DES	ITEM
A1L142	66	A1Q428	79	A1R114	99	A1R200	111	A1R271	135
A1L143	66	A1Q429	70	A1R115	99	A1R202	112	A1R279	136
A1L192	66	A1Q440	79	A1R120	100	A1R203	112	A1R281	125
A1L193	66	A1Q441	79	A1R121	100	A1R204	113	A1R282	137
A1L960	67	A1Q473	83	A1R122	101	A1R206	114	A1R283	109
A1L961	67	A1Q474	83	A1R125	102	A1R207	114	A1R284	138
A1P9644	68	A1Q487	82	A1R126	103	A1R210	115	A1R285	139
A1P9802	69	A1Q509	80	A1R130	104	A1R212	116	A1R286	140
A1Q102	70	A1Q511	80	A1R131	104	A1R213	116	A1R287	140
A1Q103	70	A1Q525	71	A1R132	105	A1R215	117	A1R288	115
A1Q114	71	A1Q576	81	A1R133	106	A1R216	118	A1R289	115
A1Q115	71	A1Q578	81	A1R135	107	A1R217	118	A1R292	141
A1Q152	70	A1Q586	84	A1R136	107	A1R218	119	A1R293	142
A1Q153	70	A1Q756	85	A1R138	103	A1R219	119	A1R301	123
A1Q164	71	A1Q770	80	A1R139	108	A1R220	120	A1R302	123
A1Q165	71	A1Q775	86	A1R142	107	A1R222	121	A1R303	123
A1Q202	72	A1Q779	87	A1R143	107	A1R223	121	A1R304	143
A1Q203	72	A1Q780	71	A1R144	109	A1R225	122	A1R305	143
A1Q206	73	A1Q785	86	A1R145	110	A1R226	123	A1R306	144
A1Q207	73	A1Q789	87	A1R150	93	A1R227	123	A1R307	144
A1Q230	74	A1Q804	80	A1R151	93	A1R230	116	A1R309	145
A1Q231	74	A1Q814	80	A1R152	94	A1R231	116	A1R310	146
A1Q254	75	A1Q825	82	A1R153	94	A1R233	116	A1R311	146
A1Q255	75	A1Q829	81	A1R154	95	A1R234	124	A1R312	147
A1Q256	75	A1Q835	81	A1R155	95	A1R235	124	A1R314	148
A1Q257	75	A1Q840	86	A1R156	96	A1R236	125	A1R315	148
A1Q283	76	A1Q845	87	A1R158	97	A1R239	102	A1R317	149
A1Q284	70	A1Q885	88	A1R159	98	A1R240	126	A1R318	150
A1Q285	70	A1Q908	89	A1R164	99	A1R241	127	A1R319	151
A1Q302	77	A1Q928	85	A1R165	99	A1R242	128	A1R321	152
A1Q303	77	A1Q930	89	A1R170	100	A1R244	129	A1R322	153
A1Q327	77	A1Q935	90	A1R171	100	A1R245	129	A1R324	107
A1Q328	77	A1Q938	83	A1R172	101	A1R250	123	A1R326	123
A1Q382A	78	A1Q939	83	A1R175	102	A1R251	123	A1R327	123
A1Q382B	78	A1Q944	85	A1R176	103	A1R254	130	A1R328	123
A1Q384	79	A1Q946	91	A1R180	104	A1R255	130	A1R329	143
A1Q397	71	A1Q947	91	A1R181	104	A1R256	131	A1R330	143
A1Q402	80	A1Q9070	92	A1R182	105	A1R257	131	A1R331	144
A1Q405	70	A1R100	93	A1R183	106	A1R258	132	A1R332	144
A1Q406	70	A1R101	93	A1R185	107	A1R259	132	A1R335	154
A1Q409	80	A1R102	94	A1R186	107	A1R261	133	A1R336	154
A1Q413	71	A1R103	94	A1R188	103	A1R262	134	A1R337	147
A1Q419	79	A1R104	95	A1R189	108	A1R266	135	A1R339	147
A1Q420	79	A1R105	95	A1R192	107	A1R267	135	A1R340	148
A1Q421	70	A1R106	96	A1R193	107	A1R268	135	A1R342	149
A1Q422	81	A1R108	97	A1R194	109	A1R269	135	A1R343	150
A1Q423	82	A1R109	98	A1R195	110	A1R270	135	A1R344	151

Figure 2. Circuit Card Assembly A1 (Sheet 9 of 11)

REFERENCE DESIGNATION-TO-ITEM NUMBER TABLE

REF DES	ITEM	REF DES	ITEM	REF DES	ITEM	REF DES	ITEM	REF DES	ITEM
A1R346	152	A1R416	178	A1R478	192	A1R568	202	A1R799	168
A1R347	153	A1R417	178	A1R479	127	A1R569	198	A1R800	221
A1R349	107	A1R419	103	A1R486	123	A1R571	197	A1R804	175
A1R350	144	A1R420	107	A1R487	123	A1R572	175	A1R805	172
A1R351	144	A1R421	179	A1R494	120	A1R573	197	A1R810	221
A1R352	155	A1R422	168	A1R499	120	A1R574	175	A1R814	175
A1R353	155	A1R423	168	A1R500	107	A1R576	139	A1R818	108
A1R354	156	A1R424	179	A1R501	173	A1R577	123	A1R820	202
A1R356	157	A1R426	180	A1R502	111	A1R578	139	A1R822	222
A1R357	158	A1R427	180	A1R503	178	A1R580	203	A1R823	222
A1R358	107	A1R428	175	A1R504	195	A1R586	107	A1R825	223
A1R359	159	A1R429	175	A1R505	178	A1R618	204	A1R826	185
A1R360	160	A1R432	181	A1R507	196	A1R645	171	A1R828	224
A1R361	107	A1R433	181	A1R509	197	A1R646	205	A1R830	151
A1R363	161	A1R434	182	A1R510	109	A1R647	175	A1R832	225
A1R365	142	A1R435	182	A1R511	193	A1R648	173	A1R834	107
A1R366	162	A1R440	107	A1R512	198	A1R649	173	A1R835	226
A1R367	111	A1R441	107	A1R513	196	A1R673	206	A1R836	175
A1R369	163	A1R442	183	A1R514	109	A1R676	109	A1R840	139
A1R372	164	A1R443	183	A1R516	193	A1R756	207	A1R841	227
A1R374	162	A1R444	184	A1R517	198	A1R757	139	A1R842	228
A1R381	165	A1R446	185	A1R518	175	A1R758	208	A1R844	185
A1R382	144	A1R447	143	A1R523	199	A1R759	209	A1R845	206
A1R384	166	A1R448	186	A1R524	121	A1R760	210	A1R849	175
A1R385	167	A1R449	186	A1R525	200	A1R761	211	A1R851	229
A1R386	111	A1R451	168	A1R526	143	A1R764	171	A1R852	179
A1R389	168	A1R452	187	A1R527	193	A1R766	212	A1R853	177
A1R390	107	A1R453	144	A1R528	111	A1R768	213	A1R854	206
A1R392	163	A1R454	144	A1R529	193	A1R770	144	A1R858	105
A1R393	169	A1R455	107	A1R538	173	A1R773	189	A1R860	230
A1R395	111	A1R457	188	A1R539	173	A1R775	214	A1R870	231
A1R397	170	A1R458	189	A1R540	105	A1R776	215	A1R871	175
A1R398	171	A1R459	190	A1R541	105	A1R777	144	A1R872	136
A1R399	163	A1R460	191	A1R544	115	A1R778	107	A1R873	232
A1R402	172	A1R461	191	A1R545	175	A1R779	216	A1R874	231
A1R403	173	A1R462	146	A1R547	175	A1R780	144	A1R875	175
A1R405	163	A1R463	192	A1R548	175	A1R782	217	A1R877	175
A1R406	163	A1R464	115	A1R549	201	A1R783	218	A1R885	207
A1R407	170	A1R465	115	A1R555	125	A1R785	216	A1R886	233
A1R408	107	A1R467	193	A1R556	173	A1R786	217	A1R888	234
A1R409	103	A1R468	193	A1R558	173	A1R787	144	A1R889	234
A1R410	174	A1R469	193	A1R560	173	A1R788	107	A1R890	234
A1R411	122	A1R470	193	A1R561	173	A1R789	216	A1R891	234
A1R412	175	A1R473	103	A1R562	173	A1R792	219	A1R892	234
A1R413	176	A1R474	175	A1R564	162	A1R793	220	A1R893	235
A1R414	177	A1R476	194	A1R565	194	A1R796	168	A1R894	234
A1R415	177	A1R477	174	A1R566	105	A1R797	168	A1R905	236

Figure 2. Circuit Card Assembly A1 (Sheet 10 of 11)

TM 11-6625-3135-24P

REFERENCE DESIGNATION-TO-ITEM NUMBER TABLE

REF DES	ITEM	REF DES	ITEM	REF DES	ITEM	REF DES	ITEM	REF DES	ITEM
A1R906	236	A1R941	175	A1U335	262	A1W335	285	A1W732	285
A1R907	237	A1R942	175	A1U350	263	A1W350	285	A1W770	285
A1R908	108	A1R943	248	A1U426	264	A1W351	285	A1W780	285
A1R909	238	A1R944	175	A1U460	265	A1W402	285	A1W885	285
A1R910	194	A1R945	249	A1U502	266	A1W408	285	A1W954	285
A1R912	239	A1R946	144	A1U504	267	A1W410	285	A1W955	285
A1R913	240	A1R947	144	A1U506	268	A1W428	285	A1W956	285
A1R914	241	A1R949	250	A1U532	269	A1W429	285	A1W959	285
A1R915	240	A1R964	251	A1U537	270	A1W453	285	A1W960	285
A1R916	242	A1R966	251	A1U540	271	A1W459	285	A1W961	285
A1R917	243	A1R971	252	A1U555	272	A1W460	285	A1W964	285
A1R919*	122	A1R976	173	A1U565	273	A1W479	285	A1W965	285
A1R919*	176	A1R978	173	A1U758	274	A1W494	285	A1W966	285
A1R919*	207	A1R9272	253	A1U930	275	A1W535	285	A1W967	285
A1R921	243	A1R9273	253	A1U975	276	A1W537	285	A1W968	285
A1R922	179	A1RT236	254	A1VR200	277	A1W538	285	A1W971	285
A1R925	195	A1S901	255	A1VR645	278	A1W555	285	A1W972	285
A1R926	244	A1T390	256	A1VR712	279	A1W556	285	A1W974	285
A1R927	185	A1T906	257	A1VR764	280	A1W558	285	A1W975	285
A1R928	221	A1T944	258	A1VR782	281	A1W560	285	A1W976	285
A1R929	108	A1T948	259	A1VR828	282	A1W582	285	A1W977	285
A1R930	185	A1TP940	68	A1VR925	283	A1W591	285	A1W979	285
A1R934	245	A1TP950	68	A1VR935	284	A1W592	285	A1W992	285
A1R935	166	A1U130	260	A1VR943	278	A1W602	285	A1W995	285
A1R937	246	A1U180	260	A1W282	285	A1W603	285	A1W997	285
A1R938	126	A1U225	261	A1W283	285	A1W635	285	A1W998	285
A1R939	247	A1U310	262	A1W310	285	A1W649	285	A1W999	285
A1R940	179								

EL9WL0016

\* RESISTOR A1R919 VALUE SELECTED DURING TEST, AND MAY BE ITEM 122, 176, OR 207

Figure 2. Circuit Card Assembly A1 (Sheet 11 of 11)

(1) ITEM NO	(2) SMR CODE	(3) FSCM	(4) PART NUMBER	(5) DESCRIPTION AND USABLE ON CODE (UOC)	(6) QTY
GROUP 01 CIRCUIT CARD ASSEMBLY A1					
FIG 2					
1	PAHZZ	DD81349	M39014/05-2228	CAPACITOR, FIXED, CER	6
2	PAHZZ	04222	MA101C102MAR	CAPACITOR, FIXED, CER	25
3	PAHZZ	80009	281-0772-00	CAPACITOR, FIXED, CER	8
4	PAHZZ	59660	805534Y5D0152J	CAPACITOR, FIXED, CER	2
5	PAHZZ	51642	T150-050NP0180J	CAPACITOR, FIXED, CER	1
6	PAHZZ	04222	MA101A680KAA	CAPACITOR, FIXED, CER	3
7	PAHZZ	80009	281-0140-//	CAPACITOR, VARIABLE	2
8	PAHZZ	56289	173D225X0020V	CAPACITOR, FIXED, ELE	3
9	PAHZZ	80009	281-0500-00	CAPACITOR, FIXED, CER	1
10	PAHZZ	00853	D155F191F0	CAPACITOR, FIXED, MIC	2
11	PAHZZ	54583	MA12C0G2A121J	CAPACITOR, FIXED, CER	1
12	PAHZZ	59660	301-000C0G0220K	CAPACITOR	1
13	PAHZZ	04222	MA101A510JAA	CAPACITOR, FIXED, CER	1
14	PAHZZ	81349	M39014/05-2237	CAPACITOR, FIXED, CER	2
15	PAHZZ	80009	281-0768-00	CAPACITOR, FIXED, CER	3
16	PAHZZ	04222	MA201C103KAA	CAPACITOR, FIXED, CER	10
17	PAHZZ	80009	281-0775-00	CAPACITOR, FIXED, CER	19
18	PCHZZ	55680	ULA1A220TEA	CAPACITOR, FIXED, ELE	4
19	PAHZZ	04222	MA101A4R7DAA	CAPACITOR, FIXED, CER	2
20	PAHZZ	72136	DM15CD16R8D04CR	CAPACITOR, FIXED, MIC	1
21	PAHZZ	04222	5R305SE474MAA	CAPACITOR, FIXED, CER	1
22	PAHZZ	81349	M39014/02-1350	CAPACITOR, FIXED, CER	1
23	PAHZZ	56289	1C20C0G332J100B	CAPACITOR, FIXED, CER	1
24	PAHZZ	56289	173D335X9015V	CAPACITOR, FIXED, ELE	5
25	PAHZZ	04222	MA101A181JAA	CAPACITOR, FIXED, CER	1
26	PAHZZ	96733	R3207	CAPACITOR, FIXED, CER	2
27	PAHZZ	04222	MA101A3R9DAA	CAPACITOR, FIXED, CER	1
28	PAHZZ	90201	TAC105K035P02	CAPACITOR, FIXED, ELE	2
29	PAHZZ	04222	GC101C182KAA	CAPACITOR, FIXED, CER	2
30	PAHZZ	04222	MA101A6R8DAA	CAPACITOR, FIXED, CER	1
31	PAHZZ	04222	MA101A150KAA	CAPACITOR, FIXED, CER	2
32	PAHZZ	59660	855-XXXY5E0222J	CAPACITOR, FIXED, CER	1
33	PAHZZ	80031	2502A0R503VP02F0	CAPACITOR, VARIABLE	2
34	PAHZZ	20932	202EL200AT222K	CAPACITOR, FIXED, CER	3
35	PAHZZ	19396	223K02PT485	CAP, FXD, PLASTIC	2
36	PAHZZ	56289	2C20Z5U104Z200B	CAPACITOR, FIXED, CER	6
37	PAHZZ	0422	MA101A271KAA	CAPACITOR, FIXED, CER	1
38	PAHZZ	59660	878521SY5S102M	CAPACITOR, FIXED, CER	2
39	PAHZZ	56289	430P582	CAPACITOR, FIXED, PLA	4
40	PAHZZ	60935	158 / .068/M/250/H	CAPACITOR, FIXED, PLA	1
41	PAHZZ	56289	17D1149	CAPACITOR, FIXED, ELE	1
42	PAHZZ	14752	230B1E105K	CAPACITOR, FIXED, PLA	1
43	PAHZZ	80009	283-0481-00	CAPACITOR, FIXED, CER	1
44	PAHZZ	55680	ULB1E101MEA	CAPACITOR, FIXED, ELE	1
45	PAHZZ	55680	ULB1E102TFAANA	CAPACITOR, FIXED, ELE	1
46	PAHZZ	54473	ECE-A100V10L	CAPACITOR, FIXED, ELE	2
47	PAHZZ	55680	UHC2C330TFA	CAPACITOR, FIXED, ELE	1
48	PAHZZ	90201	VPR271N040E1E1C	CAPACITOR, FIXED, ELE	1

(1) ITEM NO	(2) SMR CODE	(3) FSCM	(4) PART NUMBER	(5) DESCRIPTION AND USABLE ON CODE (UOC)	(6) QTY
49	PAHZZ	90201	VPX841N012E1E1C	CAPACITOR, FIXED, ELE	6
50	PAHZZ	59660	0301-080C0J0339C	CAPACITOR, FIXED, CER	2
51	PAHZZ	80009	152-0141-02	SEMICONDUCTOR DEVIC	47
52	PAHZZ	14433	G866	SEMICONDUCTOR DEVIC	1
53	PAHZZ	07263	FDH5004	SEMICONDUCTOR DEVIC	4
54	PAHZZ	81349	JAN1N3191	SEMICONDUCTOR DEVIC	4
55	PAHZZ	12969	UES1106	RECTIFIER, SEMICONDU	1
56	PAHZZ	07263	FDH2161	SEMICONDUCTOR DEVIC	1
57	PAHZZ	12969	UTR308	SEMICONDUCTOR DEVIC	8
58	PAHZZ	12969	UTR307	SEMICONDUCTOR DEVIC	2
59	PAHZZ	04713	1N5817	SEMICONDUCTOR DEVIC	2
60	PAHZZ	43944	A1B-3	LAMP, GLOW	3
61	PAHZZ	50434	HLMP3910	LIGHT EMITTING DIOD	1
62	PAHZZ	34899	2743001111	CORE, ELECTROMAGNET	3
63	PAHZZ	02114	56-590-65/4A6	CORE, ELECTROMAGNET	1
64	PAHZZ	56880	J41405-TC	CORE, ELECTROMAGNET	1
65	PAHZZ	00779	5-3809509	CONNECTOR, RECEPTAC	3
66	PAHZZ	80009	108-0420-00	COIL, RADIO FREQUENC	4
67	PAHZZ	02113	B8724	COIL, RADIO FREQUENC	2
68	PAHZZ	22526	48283-036	TERMINAL, STUD	3
69	PAHZZ	22526	48283-029	CONTACT, ELECTRICAL	7
70	PAHZZ	04713	SPS8223	TRANSISTOR	10
71	PAHZZ	80131	2N3904	TRANSISTOR	8
72	PAHZZ	04713	SRF 518	TRANSISTOR	2
73	PAHZZ	01295	SKA6664	TRANSISTOR	2
74	PAHZZ	04713	SPS8236	TRANSISTOR	2
75	PAHZZ	01281	LT4403	TRANSISTOR	4
76	PAHZZ	04713	SPS8317	TRANSISTOR	1
77	PAHZZ	04713	SPS8608M	TRANSISTOR	4
78	PAHZZ	17856	J2012	SEMICONDUCTOR DEVIC	1
79	PAHZZ	04713	SPS8224	TRANSISTOR	7
80	PAHZZ	04713	SPS6868	TRANSISTOR	6
81	PAHZZ	04713	SPS6866K	TRANSISTOR	5
82	PAHZZ	04713	SPS8246	TRANSISTOR	3
83	PAHZZ	80009	151-0276-00	TRANSISTOR	4
84	PAHZZ	04713	SPS8802-1	TRANSISTOR	1
85	PAHZZ	27014	T07391E2	TRANSISTOR	3
86	PAHZZ	80009	151-0347-00	TRANSISTOR	3
87	PAHZZ	04713	SPS6700	TRANSISTOR	3
88	PAHZZ	80009	151-0443-00	TRANSISTOR	1
89	PAHZZ	80009	151-0164-00	TRANSISTOR	2
90	PAHZZ	03508	C106B2X283	DIODE	1
91	PAHZZ	04713	SJE389	TRANSISTOR	2
92	PAHZZ	04713	MPT3N40	TRANSISTOR	1
93	PAHZZ	01121	CB4305	RESISTOR, FIXED, COMP	4
94	PAHZZ	81349	RNC55H4020FS	RESISTOR, FIXED, FILM	4
95	PAHZZ	81349	RNC55K1100FS	RESISTOR, FIXED, FILM	4
96	PAHZZ	91637	MFF1816G464R0F	RESISTOR, FIXED, FILM	2
97	PAHZZ	8009	321-0223-0	RESISTOR, FIXED, FILM	2
98	PAHZZ	91637	CMF55116G19600F	RES, FXD, FILM	2
99	PAHZZ	91637	CMF55116G21500F	RES, FXD, FILM	4
100	PAHZZ	91637	MFF1816G187R0F	RESISTOR, FIXED, FILM	4

(1) ITEM NO	(2) SMR CODE	(3) FSCM	(4) PART NUMBER	(5) DESCRIPTION AND USABLE ON CODE (UOC)	(6) QTY
101	PAHZZ	81349	RCR07G820JS	RESISTOR, FIXED, COMP	2
102	PAHZZ	81349	RCR07G242JS	RESISTOR, FIXED, COMP	3
103	PAHZZ	81349	RCR07G182GS	RESISTOR, FIXED, COMP	6
104	PAHZZ	81349	RCR07G510JS	RESISTOR, FIXED, COMP	4
105	PAHZZ	01121	CB5115	RESISTOR, FIXED, COMP	6
106	PAHZZ	81349	RCR07G111JS	RESISTOR, FIXED, COMP	2
107	PAHZZ	81349	RCR07G101JS	RESISTOR, FIXED, COMP	23
108	PAHZZ	81349	RCR07G302JS	RESISTOR, FIXED, COMP	5
109	PAHZZ	81349	RCR07G471JS	RESISTOR, FIXED, COMP	6
110	PAHZZ	73138	72-27-0	RESISTOR, VARIABLE, N	2
111	PAHZZ	81349	RCR07G911JS	RESISTOR, FIXED, COMP	6
112	PAHZZ	81349	RNC60K6980FS	RESISTOR, FIXED, FILM	2
113	PAHZZ	81349	RNC55K82R5FS	RESISTOR, FIXED, FILM	1
114	PAHZZ	91637	MFF1816G274R0F	RESISTOR, FIXED, FILM	2
115	PAHZZ	01121	CB4315	RESISTOR, FIXED, COMP	6
116	PAHZZ	91637	CMF55116G76R80F	RESISTOR, FIXED, FILM	5
117	PAHZZ	81349	RNC55K2490FS	RESISTOR, FIXED, FILM	1
118	PAHZZ	81349	RNC55K4870FS	RESISTOR, FIXED, FILM	2
119	PAHZZ	81349	RNC55H1130FS	RESISTOR, FIXED, FILM	2
120	PAHZZ	01121	CB33G5	RESISTOR, FIXED, COMP	3
121	PAHZZ	81349	RNC55K2002FS	RESISTOR, FIXED, FILM	3
122	PAHZZ	80031	5043CX10K00J	RESISTOR, FIXED, COMP RESISTOR R919 SELECTED BY TEST	3
123	PAHZZ	81349	RCR07G221JS	RESISTOR, FIXED, COMP	13
124	PAHZZ	81349	RCR07G360JS	RESISTOR, FIXED, COMP	2
125	PAHYZZ	81349	RCR07G821JS	RESISTOR, FIXED, COMP	3
126	PAHZZ	73138	72-23-0	RESISTOR, VARIABLE, N	2
127	PAHZZ	32997	3386X-T07-102	RESISTOR, VARIABLE, N	2
128	PAHZZ	81349	RCR07G273JS	RESISTOR, FIXED, COMP	1
129	PAHZZ	81349	RNC55K6040FS	RESISTOR, FIXED, FILM	2
130	PAHZZ	91637	MFF1816G137R0F	RESISTOR, FIXED, FILM	2
131	PAHZZ	75042	CEBT0-6490F	RES, FXD, FILM	2
132	PAHZZ	81349	RNC60K7320FS	RESISTOR, FIXED, FILM	2
133	PAHZZ	91637	CMF65116G39R20F	RES, FXD, FILM	1
134	PAHZZ	81349	RCR07G151JS	RESISTOR, FIXED, COMP	1
135	PAHZZ	75042	CECT0-1500F	RESISTOR, FIXED, FILM	6
136	PAHZZ	81349	RCR07G223JS	RESISTOR, FIXED, COMP	2
137	PAHZZ	81349	RCR07G752JS	RESISTOR, FIXED, COMP	1
138	PAHZZ	80009	315-0621-00	RESISTOR	1
139	PAHZZ	01121	CB5615	RESISTOR, FIXED, COMP	5
140	PAHZZ	91637	CMF55116G49R90F	RESISTOR, FIXED, FILM	2
141	PAHZZ	81349	RNC55K7150FS	RESISTOR, FIXED, FILM	1
142	PAHZZ	81349	RCR07G620JS	RESISTOR, FIXED, COMP	2
143	PAHZZ	81349	RCR07G152JS	RESISTOR, FIXED, COMP	6
144	PAHZZ	81349	RCR07G470JS	RESISTOR, FIXED, COMP	15
145	PAHZZ	32997	3352T-CK5-501	RESISTOR, VARIABLE, W	1
146	PAHZZ	81349	RNC55K1021FS	RESISTOR, FIXED, FILM	3
147	PAHZZ	81349	RNC55J1000FS	RESISTOR, FIXED, FILM	2
148	PAHZZ	81349	RNC55K5760FS	RESISTOR, FIXED, FILM	4
149	PAHZZ	81349	RNC60K1821FS	RESISTOR, FIXED, FILM	2
150	PAHZZ	91637	CMF55116G10000F	RESISTOR, FIXED, FILM	2
151	PAHZZ	81349	RNR60C1581FS	RESISTOR, FIXED, FILM	3

(1) ITEM NO	(2) SMR CODE	(3) FSCM	(4) PART NUMBER	(5) DESCRIPTION AND USABLE ON CODE (UOC)	(6) QTY
152	PAHZZ	91637	CMF55116G14300F	RES,FXD,FILM	2
153	PAHZZ	81349	RNC55J2942FS	RESISTOR, FIXED, FILM	2
154	PAHZZ	80009	321-0203-00	RESISTOR, FIXED, FILM	2
155	PAHZZ	80009	321-0274-00	RESISTOR, FIXED, FILM	2
156	PAHZZ	81349	RCR07G272JS	RESISTOR, FIXED, COMP	1
157	PAHZZ	01121	CB6225	RESISTOR, FIXED, COMP	1
158	PAHZZ	81349	RNC55K3480FS	RESISTOR, FIXED, FILM	1
159	PAHZZ	81349	RNC55K3400FS	RESISTOR, FIXED, FILM	1
160	PAHZZ	81349	RNC60K4120FS	RESISTOR, FIXED, FILM	1
161	PAHZZ	81349	RCR07G331JS	RESISTOR, FIXED, COMP	1
162	PAHZZ	57668	NTR25J-E02K0	RESISTOR, FIXED, COMP	3
163	PAHZZ	57668	NTR25J-E750E	RESISTOR, FIXED, COMP	5
164	PAHZZ	81349	RCR07G220JS	RESISTOR, FIXED, COMP	1
165	PAHZZ	81349	RNC55K4123FS	RESISTOR, FIXED, FILM	1
166	PAHZZ	81349	RCR07G121JS	RESISTOR, FIXED, COMP	2
167	PAHZZ	01121	CB1305	RESISTOR, FIXED, COMP	1
168	PAHZZ	81349	RCR07G100JS	RESISTOR, FIXED, COMP	7
169	PAHZZ	81349	RCR07G240JS	RESISTOR, FIXED, COMP	1
170	PAHZZ	011212	CB2005	RESISTOR, FIXED, COMP	2
171	PAHZZ	57668	NTR25J-E200E	RESISTOR, FIXED, COMP	3
172	PAHZZ	81349	RCR07G562JS	RESISTOR, FIXED, COMP	2
173	PAHZZ	81349	RCR07G512JS	RESISTOR, FIXED, COMP	13
174	PAHZZ	81349	RCR07G132JS	RESISTOR, FIXED, COMP	2
175	PAHZZ	81349	RCR07G102JS	RESISTOR, FIXED, COMP	21
176	PAHZZ	01121	CB1135	RESISTOR, FIXED, COMP RESISTOR R919 SELECTED BY TEST	1
177	PAHZZ	01121	CB2445	RESISTOR, FIXED, COMP	3
178	PAHZZ	57668	NTR25J-E47K0	RESISTOR, FIXED, COMP	4
179	PAHZZ	81349	RCR32G103JS	RESISTOR, FIXED, COMP	5
180	PAHZZ	57668	NTR25J-E430K	RESISTOR, FIXED, COMP	2
181	PAHZZ	81349	RCR07G823JS	RESISTOR, FIXED, COMP	2
182	PAHZZ	01121	E4A205	RESISTOR, VARIABLE, N	2
183	PAHZZ	81349	RNC60K75R0FS	RESISTOR, FIXED, FILM	2
184	PAHZZ	01121	CB1625	RESISTOR, FIXED, COMP	1
185	PAHZZ	81349	RCR07G104JS	RESISTOR, FIXED, COMP	5
186	PAHZZ	01121	CB2705	RESISTOR, FIXED, COMP	2
187	PAHZZ	81349	RNC55K2210FS	RESISTOR, FIXED, FILM	1
188	PAHZZ	91637	MFF1816G316R0F	RESISTOR, FIXED, FILM	1
189	PAHZZ	81349	RNC60K7680FS	RESISTOR, FIXED, FILM	2
190	PAHZZ	81349	RNC55K7320FS	RESISTOR, FIXED, FILM	1
191	PAHZZ	81349	RNC55K2870FS	RESISTOR, FIXED, FILM	2
192	PAHZZ	81349	RNC60K1691FS	RESISTOR, FIXED, FILM	2
193	PAHZZ	813490	RCR07G392JS	RESISTOR, FIXED, COMP	8
194	PAHZZ	81349	RCR07G301JS	RESISTOR, FIXED, COMP	3
195	PAHZZ	01121	CB1245	RESISTOR, FIXED, COMP	2
196	PAHZZ	81349	RC707G391JS	RESISTOR, FIXED, COMP	2
197	PAHZZ	81349	RCR07G222JS	RESISTOR, FIXED, COMP	3
198	PAHZZ	81349	RCR07G432JS	RESISTOR, FIXED, COMP	3
199	PAHZZ	01121	CB1535	RESISTOR, FIXED, COMP	1
200	PAHZZ	81349	RNC55J2212FS	RESISTOR, FIXED, FILM	1
201	PAHZZ	57668	NTR25J-E680E	RESISTOR, FIXED, COMP	1
202	PAHZZ	80009	315-0332-00	RESISTOR, FIXED, COMP	2

(1) ITEM NO	(2) SMR CODE	(3) FSCM	(4) PART NUMBER	(5) DESCRIPTION AND USABLE ON CODE (UOC)	(6) QTY
203	PAHZZ	81349	RCR07G181JS	RESISTOR, FIXED, COMP	1
204	PAHZZ	81349	RNC55K2800FS	RESISTOR, FIXED, FILM	1
205	PAHZZ	32997	3352T-1-102	RESISTOR, VARIABLE, N	1
206	PAHZZ	57668	NTR25J-E04K7	RESISTOR, FIXED, COMP	3
207	PAHZZ	81349	RCR07G912JS	RESISTOR, FIXED, COMP RESISTOR R919 SELECTED BY TEST	2
208	PAHZZ	81349	RNC55K3092FS	RESISTOR, FIXED, FILM	1
209	PAHZZ	91637	CMF55116G59000F	RES, FXD, FILM	1
210	PAHZZ	32997	3352T-1-251	RESISTOR, VARIABLE, W	1
211	PAHZZ	81349	RNC60K1501FS	RESISTOR, FIXED, FILM	1
212	PAHZZ	81349	RNC60K1330FS	RESISTOR, FIXED, FILM	1
213	PAHZZ	81349	RNC55K4320FS	RESISTOR, FIXED, FILM	1
214	PAHZZ	75042	CECT0-1652F	RES, FXD, FILM	2
215	PAHZZ	81349	RNC60K1331FS	RESISTOR, FIXED, FILM	2
216	PAHZZ	7668	NTR25J-E24K0	RESISTOR, FIXED, COMP	2
217	PAHZZ	8009	321-0209-00	RESISTOR, FIXED, FILM	1
218	PAHZZ	91637	CMF55116G12100F	RESISTOR, FIXED, FILM	1
219	PAHZZ	81349	RNC55K5361FS	RESISTOR, FIXED, FILM	1
220	PAHZZ	91637	MFF1816G56201F	RESISTOR, FIXED, FILM	1
221	PAHZZ	81349	RCR07G682JS	RESISTOR, FIXED, COMP	3
222	PAHZZ	57668	TR50J-E 5K1	RESISTOR, FIXED, COMP	2
223	PAHZZ	81349	RC707G750JS	RESISTOR, FIXED, COMP	1
224	PAHZZ	81349	RCR07G560JS	RESISTOR, FIXED, COMP	1
225	PAHZZ	81349	RNC60K2001FS	RESISTOR, FIXED, FILM	1
226	PAHZZ	80009	321-0228-00	RESISTOR, FIXED, FILM	1
227	PAHZZ	24546	NA60D2212F	RES, FXD, FILM	1
228	PAHZZ	01121	CB2415	RESISTOR, FIXED, COMP	1
229	PAHZZ	32997	3352T-1-203	RESISTOR, VARIABLE, N	1
230	PAHZZ	011212	CB6255	RESISTOR, FIXED, COMP	1
231	PAHZZ	32997	3352T-1-104	RESISTOR, VARIABLE, N	2
232	PAHZZ	81349	RCR07G513JS	RESISTOR, FIXED, COMP	1
233	PAHZZ	81349	RCR07G184JS	RESISTOR, FIXED, COMP	1
234	PAHZZ	57668	TR50J-E 510K	RESISTOR, FIXED, COMP	6
235	PAHZZ	011212	23M909	RESISTOR, VARIABLE, N	1
236	PAHZZ	57668	TR50J-E82K	RESISTOR, FIXED, COMP	2
237	PAHZZ	91637	RS1A-90-R2J	RESISTOR, FIXED, WIRE	1
238	PAHZZ	57668	NTR25J-E39E0	RESISTOR	1
239	PAHZZ	81349	RNC55K3570FS	RESISTOR, FIXED, FILM	1
240	PAHZZ	81349	RNC60K1002FS	RESISTOR, FIXED, FILM	2
241	PAHZZ	81349	RNC60K8452FS	RESISTOR, FIXED, FILM	1
242	PAHZZ	19701	5043CX510K0J	RESISTOR, FIXED, COMP	1
243	PAHZZ	01121	CB3035	RESISTOR, FIXED, COMP	2
244	PAHZZ	01121	GB1545	RES, FXD, CMPSN	1
245	PAHZZ	80009	308-0441-00	RESISTOR, FIXED, WIRE	1
246	PAHZZ	81349	RNC55K2671FS	RESISTOR, FIXED, FILM	1
247	PAHZZ	81349	RNC55J1432FS	RESISTOR, FIXED, FILM	1
248	PAHZZ	57668	TR50J-E 4K7	RESISTOR, FIXED, COMP	1
249	PAHZZ	57668	TR50J-E2K	RESISTOR, FIXED, COMP	1
250	PAHZZ	80009	308-0677-00	RESISTOR, FIXED, WIRE	1
251	PAHZZ	01121	CB47G5	RESISTOR, FIXED, COMP	2
252	PAHZZ	75042	BW200.620HM5PCT	RESISTOR, FIXED, WIRE	1
253	PAHZZ	57668	TR50J-E 120E	RESISTOR, FIXED, COMP	2

(1) ITEM NO	(2) SMR CODE	(3) FSCM	(4) PART NUMBER	(5) DESCRIPTION AND USABLE ON CODE (UOC)	(6) QTY
254	PAHZZ	50157	2D1595	RESISTOR, THERMAL	1
255	PAHZZ	31918	NE15/F2U103EE	SWITCH, PUSH	1
256	PAHZZ	54937	DMI 500-2044	TRANSFORMER, POWER	1
257	PAHZZ	54937	5002573	TRANSFORMER, RADIO F	1
258	PAHZZ	80009	120-1347-00	TRANSFORMER, RF	1
259	PAHZZ	80009	120-1594-00	TRANSFORMER, POWER	1
260	PAHZZ	80009	155-0274-00	MICROCIRCUIT, LINEAR	2
261	PAHZZ	81349	M38510/10101BPC	MICROCIRCUIT, LINEAR	1
262	PAHZZ	02735	CA3102E-98	MICROCIRCUIT, LINEAR	2
263	PAHZZ	02735	CA3127E-98	MICROCIRCUIT, LINEAR	1
264	PAHZZ	18324	MC1458N	MICROCIRCUIT, LINEAR	1
265	PAHZZ	80009	234-0107-20	MICROCIRCUIT, LINEAR	1
266	PAHZZ	04713	MC10198	MICROCIRCUIT, DIGITA	1
267	PAHZZ	07263	96LS02	MICROCIRCUIT, DIGITA	1
268	PAHZZ	04713	MC10H131	MICROCIRCUIT, DIGITA	1
269	PAHZZ	04713	MC10H102	MICROCIRCUIT, DIGITA	1
270	PAHZZ	04713	SN74LS132NDS	MICROCIRCUIT, DIGITA	1
271	PAHZZ	07263	74LS74A	MICROCIRCUIT, DIGITA	1
272	PAHZZ	01295	SN74LS09	MICROCIRCUIT, DIGITA	1
273	PAHZZ	01295	SN74LS03	MICROCIRCUIT, DIGITA	1
274	PAHZZ	27014	GLEA134	MICROCIRCUIT, LINEAR	1
275	PAHZZ	01295	TL594CN	MICROCIRCUIT, LINEAR	1
276	PAHZZ	12969	CMX647	SEMICONDUCTOR DEVIC	1
277	PAHZZ	04713	SZG35009K3	SEMICONDUCTOR DEVIC	1
278	PAHZZ	04713	SZG20012	SEMICONDUCTOR DEVIC	2
279	PAHZZ	04713	SZ13294RL	SEMICONDUCTOR DEVIC	1
280	PAHZZ	04713	SZG30214RL	SEMICONDUCTOR, DEVIC	1
281	PAHZZ	14552	TD3810983	SEMICONDUCTOR DEVIC	1
282	PAHZZ	04713	SZG15RL	SEMICONDUCTOR DEVIC	1
283	PAHZZ	04713	SZ11738RL	SEMICONDUCTOR DEVIC	1
284	PAHZZ	04713	SZG35009K7	SEMICONDUCTOR DEVIC	1
285	PAHZZ	57668	JWW-0200E0	LEAD, ELECTRICAL	57
286	PAHZZ	80009	195-7065-00	LEAD, ELECTRICAL	1
287	PAHZZ	80009	195-7064-00	LEAD, ELECTRICAL	1
288	PAHZZ	80009	195-7063-00	LEAD, ELECTRICAL	1
289	PAHZZ	80009	195-8235-00	LEAD, ELECTRICAL	1
290	PAHZZ	80009	136-0830-00	SOCKET, PLUG IN ELEC	1
291	PAHZZ	80009	200-2735-00	COVER, POWER SWITCH	1
292	PAHZZ	80009	334-2363-00	MARKER, IDENTIFICATI	1
293	PAHZZ	80009	175-6139-00	CABLE ASSEMBLY, SPEC	1
294	PAHZZ	80009	342-0582-00	INSULATOR, PLATE	1
295	PAHZZ	80009	343-1025-00	RETAINER, TRANSISTOR	1
296	PAHZZ	80009	343-0969-00	RETAINER, TRANSISTOR	1
297	PAHZZ	80009	342-0555-00	INSULATOR, PLATE	1
298	PAHZZ	80009	407-2729-00	BRACKET, HEAT SINK	1
299	PAHZZ	78189	211-041800-00	NUT, PLAIN, ASSEMBLED	3
300	PAHZZ	80009	361-1047-00	SPACER, VARIABLE, RES	1
301	PAHZZ	80009	175-6137-00	CABLE ASSEMBLY, SPEC	1
302	PAHZZ	80009	175-6136-00	CABLE ASSEMBLY, SPEC	1
303	PAHZZ	80009	198-4819-00	CABLE ASSEMBLY, SPEC	1
304	PAHZZ	80009	175-6138-00	CABLE ASSEMBLY, SPEC	1
305	PAHZZ	80009	175-2546-01	CABLE ASSEMBLY, SPEC	1

(1)	(2)	(3)	(4)	(5)	(6)
ITEM	SMR		PART		
NO	CODE	FSCM	NUMBER	DESCRIPTION AND USABLE ON CODE (UOC)	QTY
306	PAHZZ	80009	175-6141-00	CABLE ASSEMBLY,SPEC	1

END OF FIGURE



NATIONAL STOCK NUMBER AND PART NUMBER INDEX

NATIONAL STOCK NUMBER INDEX					
STOCK NUMBER	FIG.	ITEM	STOCK NUMBER	FIG.	ITEM
5935-00-001-7558	1	46	5905-00-137-4277	2	118
5905-00-055-6118	2	176	5905-00-138-1285	2	225
5961-00-087-4063	2	54	5905-00-138-7530	2	94
5910-00-098-9281	2	14	5905-00-141-0742	2	203
5961-00-103-6748	2	72	5905-00-141-0743	2	193
5905-00-104-8362	2	174	5905-00-141-0744	2	172
5905-00-104-8363	2	101	5905-00-141-1132	2	137
5905-00-104-8368	2	144	5905-00-141-1183	2	107
5961-00-105-7681	2	51	5910-00-163-3938	2	20
5905-00-105-7764	2	197	5905-00-163-7092	2	187
5905-00-105-7768	2	139	5961-00-189-1266	2	74
5905-00-106-1248	2	184	5905-00-192-3461	2	112
5905-00-106-1249	2	104	5310-00-197-4505	1	54
5905-00-106-1356	2	143	5310-00-231-4954	1	17
5905-00-106-3668	2	164	5905-00-233-9202	2	190
5905-00-106-9357	2	223	5910-00-237-1196	2	34
5905-00-107-0656	2	168	5905-00-242-2546	2	153
5905-00-110-0388	2	185	5905-00-247-2970	2	245
5905-00-110-7620	2	175	5905-00-254-2451	2	191
5905-00-110-7622	2	221	5905-00-258-5403	2	208
5905-00-111-1679	2	173	5905-00-258-5882	2	219
5905-00-111-4727	2	156	5905-00-259-4433	2	146
5905-00-111-4750	2	194	5905-00-264-4330	2	158
5905-00-112-7039	2	192	5999-00-275-0213	2	69
5905-00-113-4860	2	186	5905-00-284-6076	2	159
5910-00-113-5499	2	22	5905-00-289-3920	2	200
5905-00-114-0710	2	161	5905-00-305-7959	2	119
5910-00-114-0805	2	15	5905-00-307-4104	2	95
5905-00-114-5343	2	103	5905-00-311-2351	2	241
5905-00-114-5344	2	233	5905-00-346-8062	2	148
5905-00-115-2261	2	207	5961-00-359-9493	2	87
5905-00-116-8556	2	136	5961-00-365-9935	2	86
5905-00-119-3504	2	128	5905-00-369-6931	2	106
5905-00-119-8768	2	125	5905-00-372-0039	2	151
5905-00-119-8811	2	134	5905-00-400-8999	2	93
5905-00-119-8812	2	166	5905-00-402-4258	2	230
5905-00-120-9154	2	109	5961-00-404-5537	2	83
5910-00-121-7849	2	1	5905-00-405-7784	2	188
5905-00-121-9932	2	196	5905-00-405-7790	2	96
5905-00-126-6692	2	142	5905-00-405-7803	2	130
5905-00-126-6698	2	124	5961-00-417-4107	2	73
5905-00-126-6705	2	251	5905-00-419-2845	2	147
5961-00-131-1196	2	53	5355-00-419-4032	1	16
5905-00-131-9729	2	108	5905-00-426-7129	2	149
5905-00-133-0440	2	224	5905-00-426-7144	2	183
5905-00-135-3972	2	170	5905-00-426-7708	2	97
5905-00-135-3973	2	123	5905-00-428-3857	2	212
5905-00-136-3890	2	232	5905-00-431-7827	2	217
5905-00-136-8406	2	102	5905-00-432-0370	2	247
5905-00-136-8431	2	198	5905-00-432-0402	2	121

NATIONAL STOCK NUMBER AND PART NUMBER INDEX

NATIONAL STOCK NUMBER INDEX					
STOCK NUMBER	FIG.	ITEM	STOCK NUMBER	FIG.	ITEM
5905-00-432-0408	2	246	5905-00-909-3954	2	243
5905-00-432-0410	2	204	5905-00-911-3757	2	157
5905-00-432-0425	2	129	5905-00-916-7739	2	135
5905-00-432-6378	2	117	5961-00-931-8250	2	89
5905-00-435-1718	2	228	5961-00-936-7720	2	283
5905-00-435-6374	2	181	5961-00-946-6635	2	81
5961-00-436-3317	2	78	5355-01-005-4089	1	28
5905-00-436-9884	2	238	5961-01-005-9751	2	279
5905-00-437-1696	2	140	5962-01-011-0382	2	264
5905-00-442-9356	2	169	5905-01-013-1415	2	126
5950-00-443-9512	2	63	5905-01-013-3179	2	132
5905-00-452-0736	2	113	6625-01-014-3446	2	285
5905-00-452-0764	2	220	6625-01-016-8693	1	72
5910-00-456-9019	2	7	5961-01-017-0390	2	59
6625-00-463-5241	1	73	5961-01-026-5373	2	58
5910-00-465-9742	2	32	5905-01-034-0704	2	254
5950-00-472-0426	2	66	5905-01-034-3413	2	145
5340-00-479-4346	1	43	5905-01-036-6416	2	210
5905-00-481-1330	2	239	5961-01-039-1194	2	90
5905-00-482-5044	2	114	6625-01-039-3503	1	77
5905-00-485-2918	2	120	5962-01-057-7884	2	261
5905-00-485-4554	2	111	5910-01-062-1968	2	17
5905-00-485-4648	2	177	5910-01-062-1970	2	3
5905-00-488-3277	2	189	5961-01-062-2704	2	61
5910-00-491-2446	2	31	5910-01-062-7224	2	33
5355-00-492-2316	1	33	5910-01-062-7349	2	18
5905-00-506-6563	2	160	5905-01-077-9702	2	231
5961-00-548-1964	2	282	5905-01-077-9708	2	229
5905-00-556-2944	2	110	5961-01-078-3606	2	85
5905-00-560-3132	2	127	6240-01-083-0238	2	60
6625-00-563-0090	1	71	5905-01-091-5481	2	155
5920-00-636-0963	1	48	5905-01-102-8712	2	165
5910-00-682-3287	2	9	6625-01-112-5250	1	76
5905-00-721-2376	2	215	6625-01-112-5966	1	74
5905-00-721-3736	2	141	5905-01-113-2859	2	205
5910-00-726-1024	2	10	6625-01-119-0155	1	70
5905-00-758-4802	2	213	5920-01-123-9854	1	47
5905-00-758-4840	2	211	5920-01-126-8941	1	49
5905-00-766-9392	2	115	5961-01-127-8397	2	88
5935-00-832-4946	1	69	5961-01-128-2797	2	82
5310-00-836-3520	1	41	5905-01-132-1353	2	122
	2	299	5910-01-137-6341	2	46
5961-00-879-7450	2	84	5999-01-138-5897	1	7
5961-00-892-8706	2	71	6625-01-139-3375	1	75
5961-00-896-6805	2	57	5935-01-147-3771	1	63
5910-00-903-8336	2	12	5910-01-153-2519	2	16
5905-00-904-5676	2	195	5940-01-159-2407	2	68
5905-00-904-5689	2	199	5910-01-185-9359	2	44
5961-00-905-6871	2	56	5910-01-187-6085	2	26
5961-00-908-7598	2	52	5961-01-188-6042	2	55

NATIONAL STOCK NUMBER AND PART NUMBER INDEX

STOCK NUMBER	NATIONAL STOCK NUMBER INDEX		FIG.	ITEM
	FIG.	ITEM		
5910-01-189-9228	2	25		
5910-01-191-9817	2	29		
5961-01-192-0077	2	70		
5961-01-192-1602	2	79		
6625-01-197-1938	1	56		

SECTION IV

TM-CODE FS6

NATIONAL STOCK NUMBER AND PART NUMBER INDEX

PART NUMBER INDEX				
FSCM	PART NUMBER	STOCK NUMBER	FIG.	ITEM
53944	A1B-3	6240-01-083-0238	2	60
75042	BW200.620HM5PCT		2	252
02113	B8724		2	67
02735	CA3102E-98		2	262
02735	CA3127E-98		2	263
01121	CB1135	5905-00-055-6118	2	176
01121	CB1245	5905-00-904-5676	2	195
01121	CB1305		2	167
01121	CB1535	5905-00-904-5689	2	199
01121	CB1625	5905-00-106-1248	2	184
01121	CB2005	5905-00-135-3972	2	170
01121	CB2415	5905-00-435-1718	2	228
01121	CB2445	5905-00-485-4648	2	177
01121	CB2705	5905-00-113-4860	2	186
01121	CB3035	5905-00-909-3954	2	243
01121	CB33G5	5905-00-485-2918	2	120
01121	CB4305	5905-00-400-8999	2	93
01121	CB4315	5905-00-766-9392	2	115
01121	CB47G5	5905-00-126-6705	2	251
01121	CB5115		2	105
01121	CB5615	5905-00-105-7768	2	139
01121	CB6225	5905-00-911-3757	2	157
01121	CB6255	5905-00-402-4258	2	230
75042	CEBTO-6490F		2	131
75042	CECTO-1500F	5905-00-916-7739	2	135
75042	CECTO-1652F		2	214
16428	CH8352		1	6
91637	CMF55116G10000F		2	150
91637	CMF55116G12100F		2	218
91637	CMF55116G14300F		2	152
91637	CMF55116G19600F		2	98
91637	CMF55116G21500F		2	99
91637	CMF55116G49R90F	5905-00-437-1696	2	140
91637	CMF55116G59000F		2	209
91637	CMF55116G76R80F		2	116
91637	CMF65116G39R20F		2	133
12969	CMX647		2	276
12697	CM41773		1	22
03508	C106B2X283	5961-01-039-1194	2	90
54937	DMI 500-2044		2	256
72136	DM15CD16R8D04CR	5910-00-163-3938	2	20
00853	D155F191F0	5910-00-726-1024	2	10
54473	ECE-A100V10L	5910-01-137-6341	2	46
01121	E4A205		2	182
07263	FDH2161	5961-00-905-6871	2	56
07263	FDH5004	5961-00-131-1196	2	53
81349	F03B250V1A	5920-00-636-0963	1	48
01121	GB1545		2	244
04222	GC101C182KAA	5910-01-191-9817	2	29
27014	GLEA134		2	274
14433	G866	5961-00-908-7598	2	52

SECTION IV

TM-CODE FS6

NATIONAL STOCK NUMBER AND PART NUMBER INDEX

PART NUMBER INDEX				
FSCM	PART NUMBER	STOCK NUMBER	FIG.	ITEM
50434	HLMP3910	5961-01-062-2704	2	61
81349	JAN1N3191	5961-00-087-4063	2	54
57668	JWW-0200E0	6625-01-014-3446	2	285
17856	J2012	5961-00-436-3317	2	78
56880	J41405-TC		2	64
01281	LT4403		2	75
04222	MA101A150KAA	5910-00-491-2446	2	31
04222	MA101A181JAA	5910-01-189-9228	2	25
04222	MA101A271KAA		2	37
04222	MA101A3R9DAA		2	27
04222	MA101A4R7DAA		2	19
04222	MA101A510JAA		2	13
04222	MA101A6R8DAA		2	30
04222	MA101A680KAA		2	6
04222	MA101C102MAR		2	2
54583	MA12C0G2A121J		2	11
04222	MA201C103KAA	5910-01-153-2519	2	16
04713	MC10H102		2	269
04713	MC10H131		2	268
04713	MC10198		2	266
18324	MC1458N	5962-01-011-0382	2	264
91637	MFF1816G137R0F	5905-00-405-7803	2	130
91637	MFF1816G187R0F		2	100
91637	MFF1816G274R0F	5905-00-482-5044	2	114
91637	MFF1816G316R0F	5905-00-405-7784	2	188
91637	MFF1816G464R0F	5905-00-405-7790	2	96
91637	MFF1816G56201F	5905-00-452-0764	2	220
04713	MPT3N40		2	92
81349	M38510/10101BPC	5962-01-057-7884	2	261
81349	M39014/02-1350	5910-00-113-5499	2	22
81349	M39014/05-2228	5910-00-121-7849	2	1
81349	M39014/05-2237	5910-00-098-9281	2	14
24546	NA60D2212F		2	227
31918	NE15/F2U103EE		2	255
57668	NTR25J-E02K0		2	162
57668	NTR25J-E04K7		2	206
57668	NTR25J-E200E		2	171
57668	NTR25J-E24K0		2	216
57668	NTR25J-E39E0	5905-00-436-9884	2	238
57668	NTR25J-E430K		2	180
57668	NTR25J-E47K0		2	178
57668	NTR25J-E680E		2	201
57668	NTR25J-E750E		2	163
81349	RCR07G100JS	5905-00-107-0656	2	168
81349	RCR07G101JS	5905-00-141-1183	2	107
81349	RCR07G102JS	5905-00-110-7620	2	175
81349	RCR07G104JS	5905-00-110-0388	2	185
81349	RCR07G111JS	5905-00-369-6931	2	106
81349	RCR07G121JS	5905-00-119-8812	2	166
81349	RCR07G132JS	5905-00-104-8362	2	174
81349	RCR07G151JS	5905-00-119-8811	2	134

SECTION IV

TM-CODE FS6

NATIONAL STOCK NUMBER AND PART NUMBER INDEX

PART NUMBER INDEX				
FSCM	PART NUMBER	STOCK NUMBER	FIG.	ITEM
81349	RCR07G152JS	5905-00-106-1356	2	143
81349	RCR07G181JS	5905-00-141-0742	2	203
81349	RCR07G182GS	5905-00-114-5343	2	103
81349	RCR07G184JS	5905-00-114-5344	2	233
81349	RCR07G220JS	5905-00-106-3668	2	164
81349	RCR07G221JS	5905-00-135-3973	2	123
81349	RCR07G222JS	5905-00-105-7764	2	197
81349	RCR07G223JS	5905-00-116-8556	2	136
81349	RCR07G240JS	5905-00-442-9356	2	169
81349	RCR07G242JS	5905-00-136-8406	2	102
81349	RCR07G272JS	5905-00-111-4727	2	156
81349	RCR07G273JS	5905-00-119-3504	2	128
81349	RCR07G301JS	5905-00-111-4750	2	194
81349	RCR07G302JS	5905-00-131-9729	2	108
81349	RCR07G331JS	5905-00-114-0710	2	161
81349	RCR07G360JS	5905-00-126-6698	2	124
81349	RCR07G392JS	5905-00-141-0743	2	193
81349	RCR07G432JS	5905-00-136-8431	2	198
81349	RCR07G470JS	5905-00-104-8368	2	144
81349	RCR07G471JS	5905-00-120-9154	2	109
81349	RCR07G510JS	5905-00-106-1249	2	104
81349	RCR07G512JS	5905-00-111-1679	2	173
81349	RCR07G513JS	5905-00-136-3890	2	232
81349	RCR07G560JS	5905-00-133-0440	2	224
81349	RCR07G562JS	5905-00-141-0744	2	172
81349	RCR07G620JS	5905-00-126-6692	2	142
81349	RCR07G682JS	5905-00-110-7622	2	221
81349	RCR07G752JS	5905-00-141-1132	2	137
81349	RCR07G820JS	5905-00-104-8363	2	101
81349	RCR07G821JS	5905-00-119-8768	2	125
81349	RCR07G823JS	5905-00-435-6374	2	181
81349	RCR07G911JS	5905-00-485-4554	2	111
81349	RCR07G912JS	5905-00-115-2261	2	207
81349	RCR32G103JS		2	179
81349	RC707G391JS	5905-00-121-9932	2	196
81349	RC707G750JS	5905-00-106-9357	2	223
81349	RNC55H1130FS	5905-00-305-7959	2	119
81349	RNC55H4020FS	5905-00-138-7530	2	94
81349	RNC55J1000FS	5905-00-419-2845	2	147
81349	RNC55J1432FS	5905-00-432-0370	2	247
81349	RNC55J2212FS	5905-00-289-3920	2	200
81349	RNC55J2942FS	5905-00-242-2546	2	153
81349	RNC55K1021FS	5905-00-259-4433	2	146
81349	RNC55K1100FS	5905-00-307-4104	2	95
81349	RNC55K2002FS	5905-00-432-0402	2	121
81349	RNC55K2210FS	5905-00-163-7092	2	187
81349	RNC55K2490FS	5905-00-432-6378	2	117
81349	RNC55K2671FS	5905-00-432-0408	2	246
81349	RNC55K2800FS	5905-00-432-0410	2	204
81349	RNC55K2870FS	5905-00-254-2451	2	191
81349	RNC55K3092FS	5905-00-258-5403	2	208

SECTION IV

TM-CODE FS6

NATIONAL STOCK NUMBER AND PART NUMBER INDEX

PART NUMBER INDEX				
FSCM	PART NUMBER	STOCK NUMBER	FIG.	ITEM
81349	RNC55K3400FS	5905-00-284-6076	2	159
81349	RNC55K3480FS	5905-00-264-4330	2	158
81349	RNC55K3570FS	5905-00-481-1330	2	239
81349	RNC55K4123FS	5905-01-102-8712	2	165
81349	RNC55K4320FS	5905-00-758-4802	2	213
81349	RNC55K4870FS	5905-00-137-4277	2	118
81349	RNC55K5361FS	5905-00-258-5882	2	219
81349	RNC55K5760FS	5905-00-346-8062	2	148
81349	RNC55K6040FS	5905-00-432-0425	2	129
81349	RNC55K7150FS	5905-00-721-3736	2	141
81349	RNC55K7320FS	5905-00-233-9202	2	190
81349	RNC55K82R5FS	5905-00-452-0736	2	113
81349	RNC60K1002FS		2	240
81349	RNC60K1330FS	5905-00-428-3857	2	212
81349	RNC60K1331FS	5905-00-721-2376	2	215
81349	RNC60K1501FS	5905-00-758-4840	2	211
81349	RNC60K1691FS	5905-00-112-7039	2	192
81349	RNC60K1821FS	5905-00-426-7129	2	149
81349	RNC60K2001FS	5905-00-138-1285	2	225
81349	RNC60K4120FS	5905-00-506-6563	2	160
81349	RNC60K6980FS	5905-00-192-3461	2	112
81349	RNC60K7320FS	5905-01-013-3179	2	132
81349	RNC60K75R0FS	5905-00-426-7144	2	183
81349	RNC60K7680FS	5905-00-488-3277	2	189
81349	RNC60K8452FS	5905-00-311-2351	2	241
81349	RNR60C1581FS	5905-00-372-0039	2	151
91637	RS1A-90-R2J		2	237
96733	R3207	5910-01-187-6085	2	26
04713	SJE389		2	91
01295	SKA6664	5961-00-417-4107	2	73
01295	SN74LS03		2	273
01295	SN74LS09		2	272
04713	SN74LS132NDS		2	270
04713	SPS6700	5961-00-359-9493	2	87
04713	SPS6866K	5961-00-946-6635	2	81
04713	SPS6868		2	80
04713	SPS8223	5961-01-192-0077	2	70
04713	SPS8224	5961-01-192-1602	2	79
04713	SPS8236	5961-00-189-1266	2	74
04713	SPS8246	5961-01-128-2797	2	82
04713	SPS8317		2	76
04713	SPS8608M		2	77
04713	SPS8802-1	5961-00-879-7450	2	84
04713	SRF 518	5961-00-103-6748	2	72
04713	SZG15RL	5961-00-548-1964	2	282
04713	SZG20012		2	278
04713	SZG30214RL		2	280
04713	SZG35009K3		2	277
04713	SZG35009K7		2	284
04713	SZ11738RL	5961-00-936-7720	2	283
04713	SZ13294RL	5961-01-005-9751	2	279

SECTION IV

TM-CODE FS6

NATIONAL STOCK NUMBER AND PART NUMBER INDEX

PART NUMBER INDEX				
FSCM	PART NUMBER	STOCK NUMBER	FIG.	ITEM
90201	TAC105K035P02		2	28
14552	TD3810983		2	281
01295	TL594CN		2	275
57668	TR50J-E 120E		2	253
57668	TR50J-E 4K7		2	248
57668	TR50J-E 5K1		2	222
57668	TR50J-E 510K		2	234
57668	TR50J-E2K		2	249
57668	TR50J-E82K		2	236
27014	T07391E2	5961-01-078-3606	2	85
51642	T150-050NP0180J		2	5
12969	UES1106	5961-01-188-6042	2	55
55680	UHC2C330TFA		2	47
55680	ULA1A220TEA	5910-01-062-7349	2	18
55680	ULB1E101MEA	5910-01-185-9359	2	44
55680	ULB1E102TFAANA		2	45
12969	UTR307	5961-01-026-5373	2	58
12969	UTR308	5961-00-896-6805	2	57
90201	VPR271N040E1E1C		2	48
90201	VPX841N012E1E1C		2	49
54583	ZUB2203-00		1	52
80009	010-6101-02	6625-00-463-5241	1	73
80009	010-6101-03	6625-01-119-0155	1	70
80009	010-6122-01		1	64
80009	013-0107-04		1	65
80009	015-0201-04	6625-01-112-5966	1	74
80009	016-0566-00	5999-01-138-5897	1	7
59660	0301-080C0J0339C		2	50
56289	1C20C0G332J100B		2	23
04713	1N5817	5961-01-017-0390	2	59
80009	108-0420-00	5950-00-472-0426	2	66
80009	119-1515-00		1	39
80009	119-1788-00		1	50
80009	120-1347-00		2	258
80009	120-1594-00		2	259
78189	1224-02	5310-00-197-4505	1	54
80009	129-0999-00		1	61
80009	131-2844-00		1	62
80009	136-0628-00		1	18
80009	136-0830-00		2	290
80009	151-0164-00	5961-00-931-8250	2	89
80009	151-0276-00	5961-00-404-5537	2	83
80009	151-0347-00	5961-00-365-9935	2	86
80009	151-0443-00	5961-01-127-8397	2	88
80009	152-0141-02	5961-00-105-7681	2	51
80009	154-0861-00		1	11
80009	155-0274-00		2	260
60935	158/.068/M/250/H		2	40
56289	17D1149		2	41
56289	173D225X0020V		2	8
56289	173D335X9015V		2	24

SECTION IV

TM-CODE FS6

NATIONAL STOCK NUMBER AND PART NUMBER INDEX

PART NUMBER INDEX				
FSCM	PART NUMBER	STOCK NUMBER	FIG.	ITEM
80009	175-0124-01	6625-00-563-0090	1	71
80009	175-0125-01	6625-01-016-8693	1	72
80009	175-1661-01	6625-01-139-3375	1	75
80009	175-2546-01		2	305
80009	175-3217-00		1	68
80009	175-6136-00		2	302
80009	175-6137-00		2	301
80009	175-6138-00		2	304
80009	175-6139-00		2	293
80009	175-6140-00		1	19
80009	175-6141-00		2	306
80009	195-0389-00		1	51
80009	195-1870-00		1	66
80009	195-5499-00		1	53
80009	195-6176-00		1	67
80009	195-7063-00		2	288
80009	195-7064-00		2	287
80009	195-7065-00		2	86
80009	195-8235-00		2	289
80009	198-4819-00		2	303
56289	2C20Z5U104Z200B		2	36
50157	2D1595	5905-01-034-0704	2	254
80131	2N3904	5961-00-892-8706	2	71
73743	2X-20319-402	5310-00-231-4954	1	17
80009	200-1388-03		1	55
80009	200-2264-00	5920-01-126-8941	1	49
80009	200-2519-00		1	40
80009	200-2520-00		1	1
80009	200-2538-00		1	3
80009	200-2735-00		2	291
20932	202EL200AT222K	5910-00-237-1196	2	34
80009	204-0833-00	5920-01-123-9854	1	47
95712	2048-2NT34		1	78
80009	206-0191-03	6625-01-039-3503	1	77
78189	211-041800-00	5310-00-836-3520	1	41
			2	299
80009	214-3375-00		1	37
19396	223K02PT485		2	35
01121	23M909		2	235
14752	230B1E105K		2	42
80009	234-0107-20		2	265
80031	2502A0R503VP02F0	5910-01-062-7224	2	33
34899	2743001111		2	62
24931	28P224-1	6625-01-112-5250	1	76
80009	281-0140-//	5910-00-456-9019	2	7
80009	281-0500-00	5910-00-682-3287	2	9
80009	281-0768-00	5910-00-114-0805	2	15
80009	281-0772-00	5910-01-062-1970	2	3
80009	281-0775-00	5910-01-062-1968	2	17
80009	283-0481-00		2	43
59660	301-000C0G0220K	5910-00-903-8336	2	12

SECTION IV

TM-CODE FS6

NATIONAL STOCK NUMBER AND PART NUMBER INDEX

PART NUMBER INDEX				
FSCM	PART NUMBER	STOCK NUMBER	FIG.	ITEM
80009	308-0441-00	5905-00-247-2970	2	245
80009	308-0677-00		2	250
13511	31-279	5935-00-001-7558	1	46
80009	311-1183-02		1	25
80009	311-2177-02		1	20
80009	315-0332-00		2	202
80009	315-0621-00		2	138
80009	321-0203-00		2	154
80009	321-0209-00	5905-00-431-7827	2	217
80009	321-0223-00	5905-00-426-7708	2	97
80009	321-0228-00		2	226
80009	321-0274-00	5905-01-091-5481	2	155
80009	333-3109-00		1	27
80009	334-2363-00		2	292
32997	3352T-CK5-501	5905-01-034-3413	2	145
32997	3352T-1-102	5905-01-113-2859	2	205
32997	3352T-1-104	5905-01-077-9702	2	231
32997	3352T-1-203	5905-01-077-9708	2	229
32997	3352T-1-251	5905-01-036-6416	2	210
95712	33600-1	5935-00-832-4946	1	69
80009	337-2775-01		1	10
32997	3386X-T07-102	5905-00-560-3132	2	127
80009	342-0555-00		2	297
80009	342-0582-00		2	294
80009	343-0969-00		2	296
80009	343-1025-00		2	295
80009	344-0132-00	5340-00-479-4346	1	43
80009	344-0347-00		1	45
80009	348-0555-00		1	44
80009	348-0659-01		1	5
80009	358-0550-00		1	26
80009	361-1047-00		2	300
80009	366-1031-03	5355-00-492-2316	1	33
80009	366-1146-00	5355-00-419-4032	1	16
80009	366-1391-03		1	12
80009	366-1480-03		1	34
80009	366-1840-03		1	30
80009	366-1850-00		1	29
80009	366-2013-00		1	59
80009	366-2049-01		1	15
80009	366-2052-01		1	31
80009	366-2146-03		1	14
80009	366-2148-01		1	32
80009	367-0289-00		1	4
80009	377-0512-00		1	36
80009	378-0237-00		1	9
80009	384-1575-00		1	35
80009	384-1576-01		1	21
80009	390-0790-11		1	2
80009	407-2729-00		2	298
80009	426-1765-02		1	8

SECTION IV

TM-CODE FS6

NATIONAL STOCK NUMBER AND PART NUMBER INDEX

PART NUMBER INDEX				
FSCM	PART NUMBER	STOCK NUMBER	FIG.	ITEM
56289	430P582		2	39
05129	461-S-70	5355-01-005-4089	1	28
22526	48283-029	5999-00-275-0213	2	69
22526	48283-036	5940-01-159-2407	2	68
00779	5-3809509		2	65
04222	5R305SE474MAA		2	21
54937	5002573		2	257
80031	5043CX10K00J	5905-01-132-1353	2	122
19701	5043CX510K0J		2	242
02114	56-590-65/4A6	5950-00-443-9512	2	63
80009	670-7615-00		1	42
80009	670-8404-00	6625-01-197-1938	1	56
80009	670-8405-00		1	57
80009	670-8406-00		1	58
80009	670-8407-00		1	23
80009	670-8418-00		1	13
80009	670-8444-00		1	60
80009	670-8819-00		1	24
80009	672-0111-00		1	38
73138	72-23-0	5905-01-013-1415	2	126
73138	72-27-0	5905-00-556-2944	2	110
07263	74LS74A		2	271
59660	805534Y5D0152J		2	4
59660	855-XXX5E0222J	5910-00-465-9742	2	32
59660	878521SY5S102M		2	38
07263	96LS02		2	267
77820	9663-1 NT-34	5935-01-147-3771	1	63

RECOMMENDED CHANGES TO EQUIPMENT TECHNICAL PUBLICATIONS



THEN, JOT DOWN THE DOPE ABOUT IT ON THIS FORM. CAREFULLY TEAR IT OUT, FOLD IT AND DROP IT IN THE MAIL!

SOMETHING WRONG WITH THIS PUBLICATION?

FROM (PRINT YOUR UNIT'S COMPLETE ADDRESS)  
 Commander  
 Stateside Army Depot  
 ATTN: AMSTA-US  
 Stateside, N.J. 07703-5007

DATE SENT  
 10 July 1975

PUBLICATION NUMBER  
 TM 11-5840-340-20P

PUBLICATION DATE  
 23 Jan 78

PUBLICATION TITLE  
 Radar Set AN/PRC-76

BE EXACT PIN-POINT WHERE IT IS

PAGE NO.	PARA-GRAPH	FIGURE NO.	TABLE NO.
33			
44		19	
45			

IN THIS SPACE TELL WHAT IS WRONG AND WHAT SHOULD BE DONE ABOUT IT:

For item 2, change the NSN to read: 5835-00-134-9186.  
 Reason: Accuracy.

Identify the cover on the junction box (item no. 5).  
 Reason: It is a separate item and is not called out on figure 19.

Add the cover of the junction box as an item in the listing for figure 19.  
 Reason: Same as above

SAMPLE

PRINTED NAME GRADE OR TITLE AND TELEPHONE NUMBER  
 SSG I. M. DeSpirito 999-1776

SIGN HERE

TEAR ALONG PERFORATED LINE

FILL IN YOUR  
UNIT'S ADDRESS

FOLD BACK

DEPARTMENT OF THE ARMY

OFFICIAL BUSINESS  
PENALTY FOR PRIVATE USE \$300

POSTAGE AND FEES PAID  
DEPARTMENT OF THE ARMY  
DOD 314



**SAMPLE**

Commander  
US Army Communications-Electronics Command  
and Fort Monmouth  
ATTN: AMSEL-ME-MP  
Fort Monmouth, New Jersey 07703-5007

TEAR ALONG PERFORATED LINE