

AT5. AR8. EQUIPMENT SHOWING

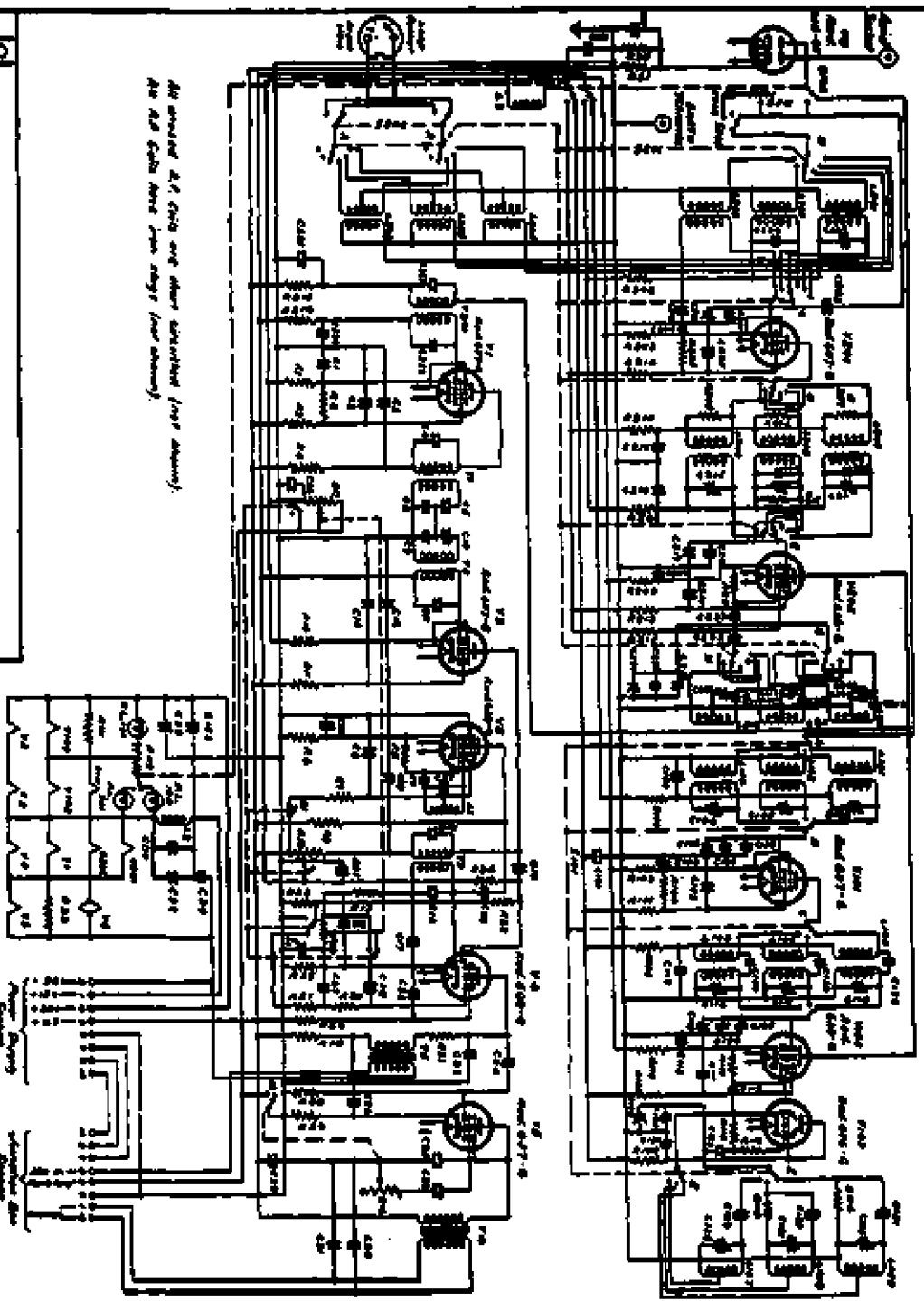
- a *Basic Installation*:- Rec, Trans, Aerial Coupling Unit, Power Unit, Junction Box, Interconnecting cables.
 b *Additional Units and facilities, which can be added when required*.
 Remote Control Unit, Pulse Unit, i/c for 3 outlets in addition to operator and Remote Control Point.

Note:- Cable Identification. Letters A.B.C. etc are assigned to each cable for identifying its position in the interwiring scheme. Various standard lengths are available in each instance. Ref to schedule of cables. Indent No corresponding to each standard length. (Sect 3 Para. 102 Instruction Book.)

MF/HF AIRCRAFT COMMUNICATION
 INSTALLATION AT5/AP8
 PHOTO N° 1704

7733C1
 7733C1

All ground A.C. C's are shown connected (first shown).
 All A.C. C's have iron cores (not shown).



AMALGAMATED WIRELESS
 WORKS LTD. - STONEY
 SCHEMATIC DIAGRAM
 RECEIVER ARG

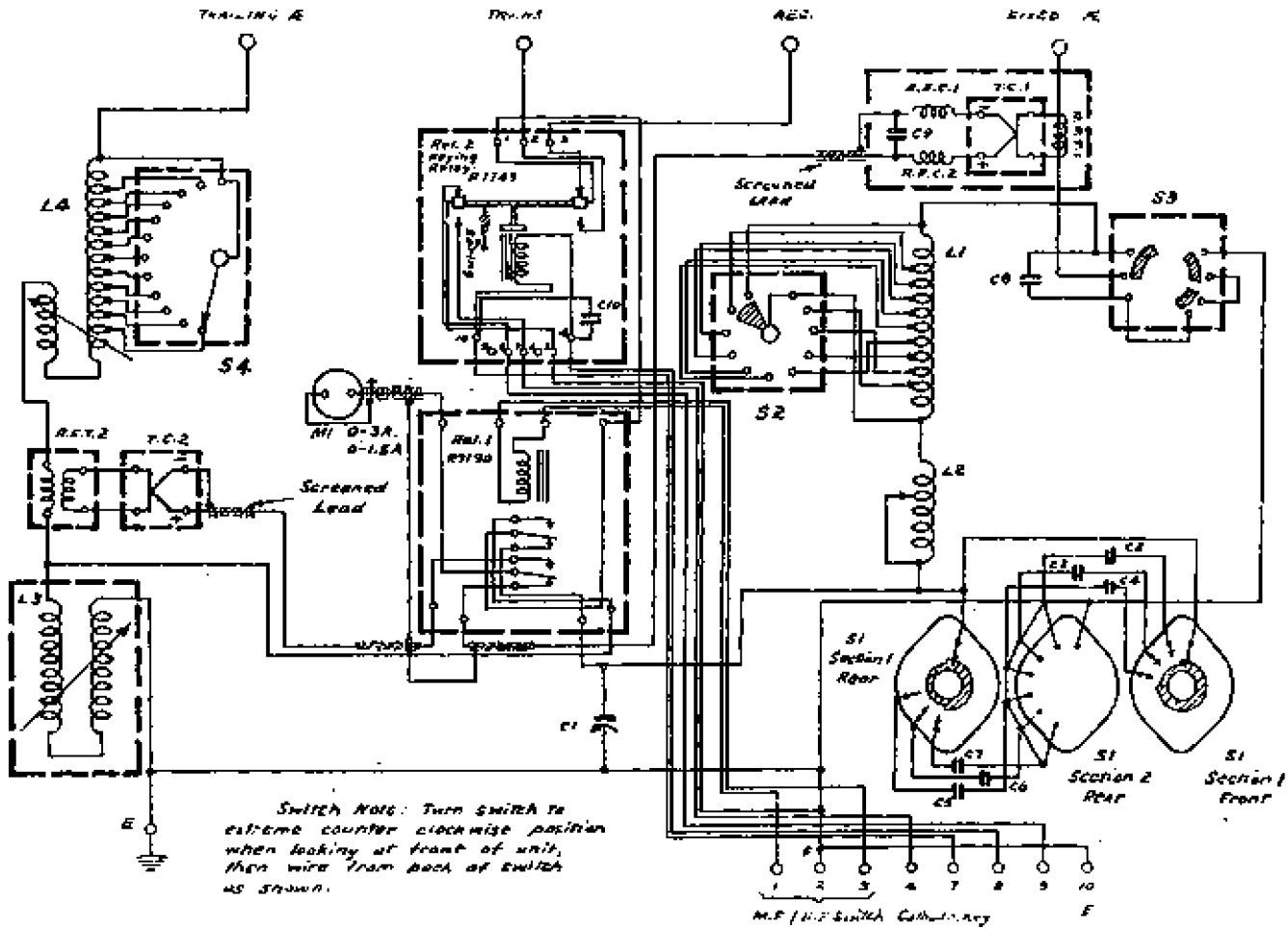
NO.	REV.	DATE	BY	CHKD.
1				
2				
3				
4				
5				
6				
7				
8				
9				
10				

TYPE C7733
 DWG 7733C1

WIRING DIAGRAM
AERIAL COUPLING UNIT

Handwritten notes:
 Revision 3010
 3/12/51
 7732 D12

7732
7732D12



7732 D12

G.A.T. 3010.31

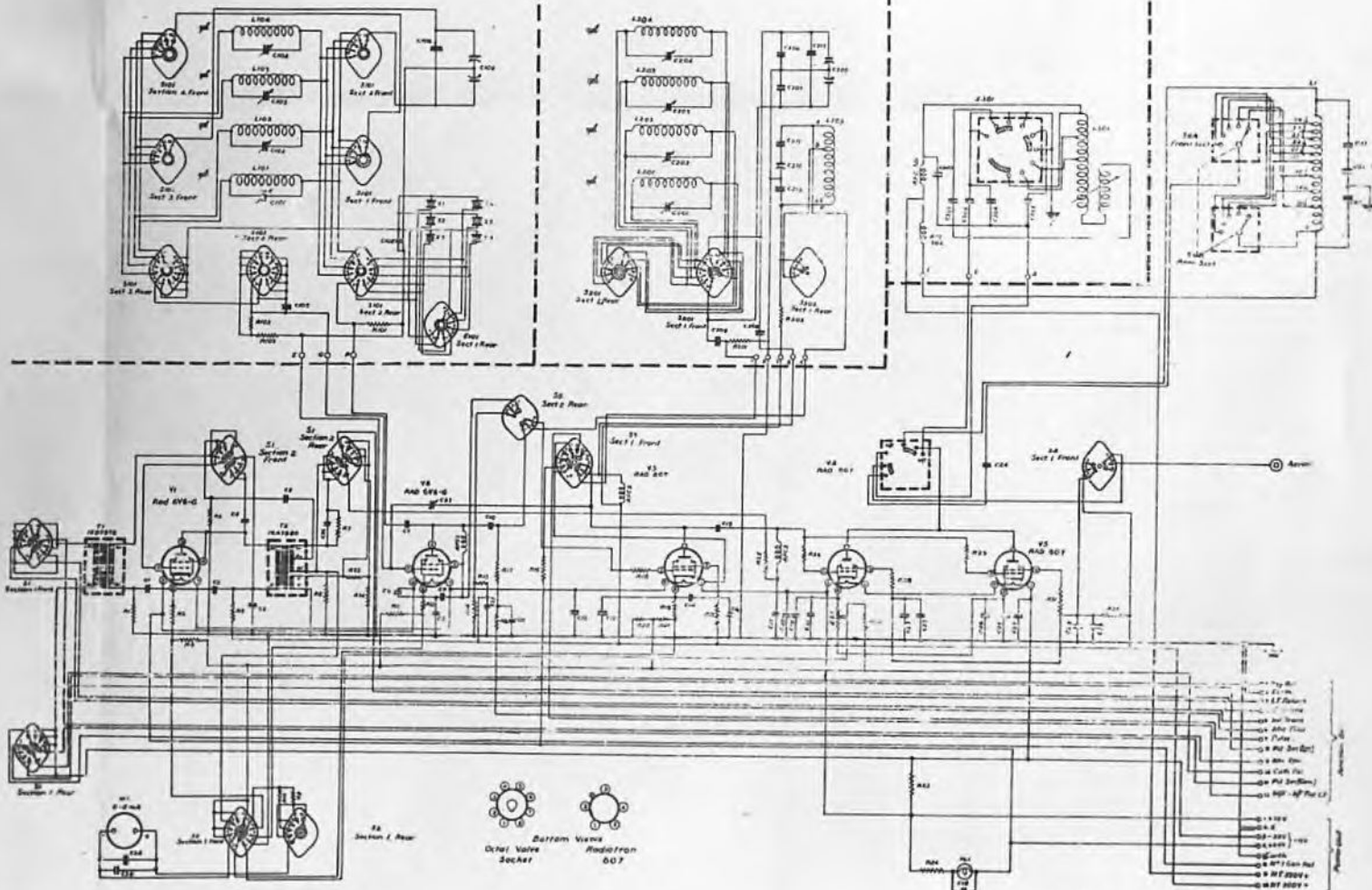
TRACAD
G.A.T. 3010.31

HF OSCILLATOR SECTION
TYPE J773D

HF BA LMF MID TUNING SECTION
TYPE J773D

MF PA SECTION
TYPE J773D

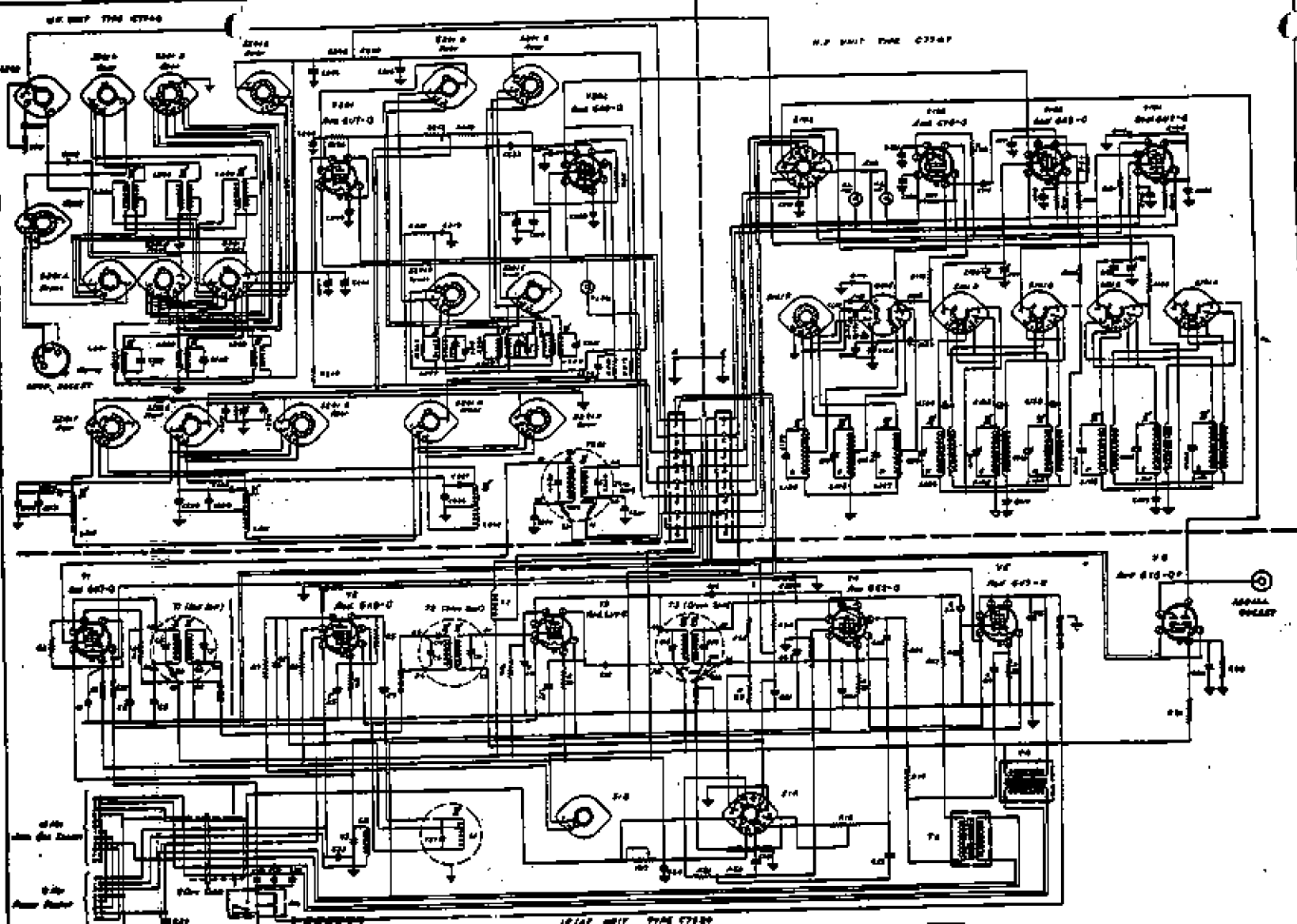
HF PA TUNING SECTION
TYPE V173D



NOTE: Dial Switch Turn switch to extreme counter-clockwise position when at front of unit then wire from back of switch as shown

7731A1
REVISION
DATE
BY

WIRING DIAGRAM TRANSMITTER AT3	TYF J773D DWL 7731A1
-----------------------------------	-------------------------



1. 12A6
 2. 6X4
 3. 6AV6
 4. 6BE6
 5. 6BD6
 6. 6BE7
 7. 6BE8
 8. 6BE9
 9. 6BE10
 10. 6BE11
 11. 6BE12
 12. 6BE13
 13. 6BE14
 14. 6BE15
 15. 6BE16
 16. 6BE17
 17. 6BE18
 18. 6BE19
 19. 6BE20
 20. 6BE21
 21. 6BE22
 22. 6BE23
 23. 6BE24
 24. 6BE25
 25. 6BE26
 26. 6BE27
 27. 6BE28
 28. 6BE29
 29. 6BE30
 30. 6BE31
 31. 6BE32
 32. 6BE33
 33. 6BE34
 34. 6BE35
 35. 6BE36
 36. 6BE37
 37. 6BE38
 38. 6BE39
 39. 6BE40
 40. 6BE41
 41. 6BE42
 42. 6BE43
 43. 6BE44
 44. 6BE45
 45. 6BE46
 46. 6BE47
 47. 6BE48
 48. 6BE49
 49. 6BE50
 50. 6BE51
 51. 6BE52
 52. 6BE53
 53. 6BE54
 54. 6BE55
 55. 6BE56
 56. 6BE57
 57. 6BE58
 58. 6BE59
 59. 6BE60
 60. 6BE61
 61. 6BE62
 62. 6BE63
 63. 6BE64
 64. 6BE65
 65. 6BE66
 66. 6BE67
 67. 6BE68
 68. 6BE69
 69. 6BE70
 70. 6BE71
 71. 6BE72
 72. 6BE73
 73. 6BE74
 74. 6BE75
 75. 6BE76
 76. 6BE77
 77. 6BE78
 78. 6BE79
 79. 6BE80
 80. 6BE81
 81. 6BE82
 82. 6BE83
 83. 6BE84
 84. 6BE85
 85. 6BE86
 86. 6BE87
 87. 6BE88
 88. 6BE89
 89. 6BE90
 90. 6BE91
 91. 6BE92
 92. 6BE93
 93. 6BE94
 94. 6BE95
 95. 6BE96
 96. 6BE97
 97. 6BE98
 98. 6BE99
 99. 6BE100

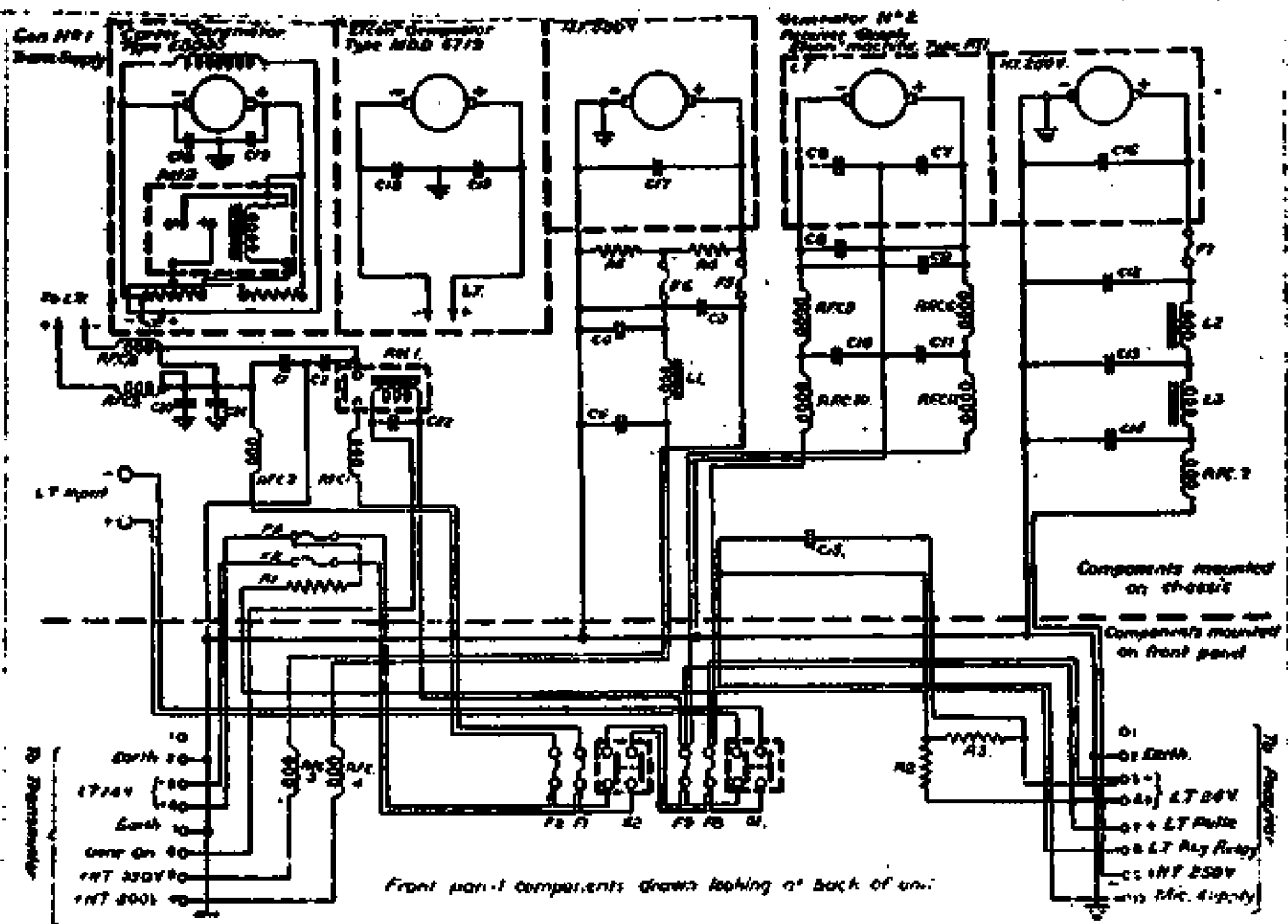
ANALOGOUS WIRING
 SUBSTITUTION - NONE
WIRING DIAGRAM
RECEIVER ARE
 TYPE C7748
 DOW 9743A1

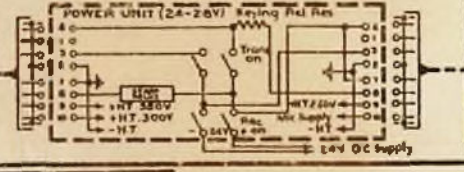
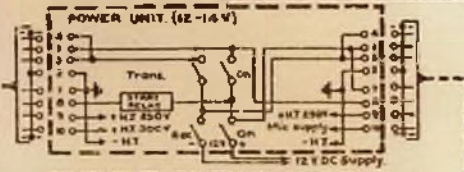
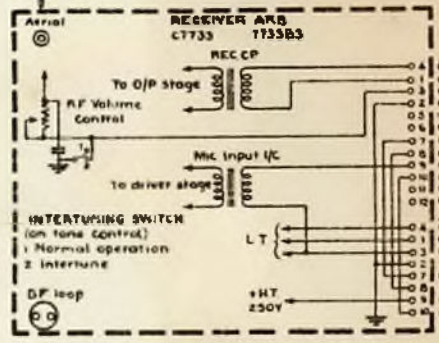
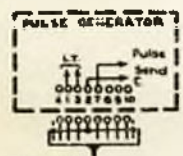
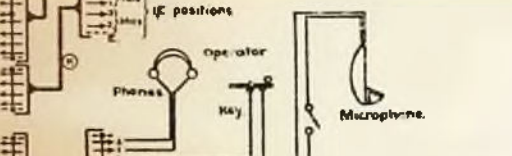
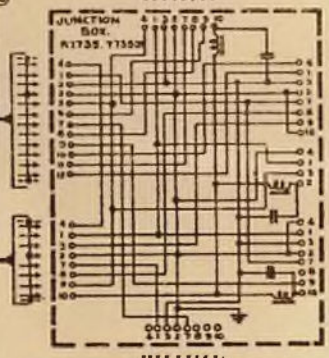
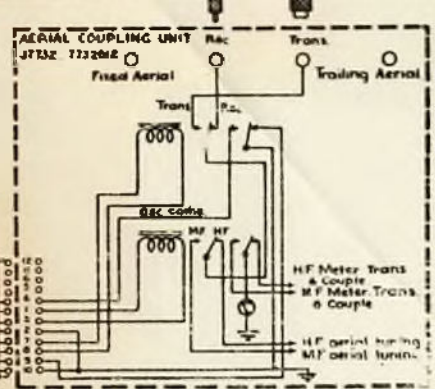
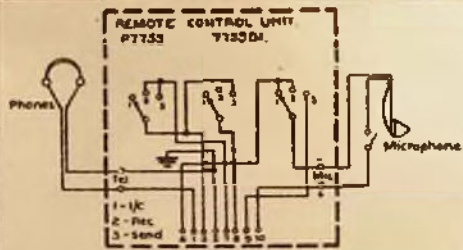
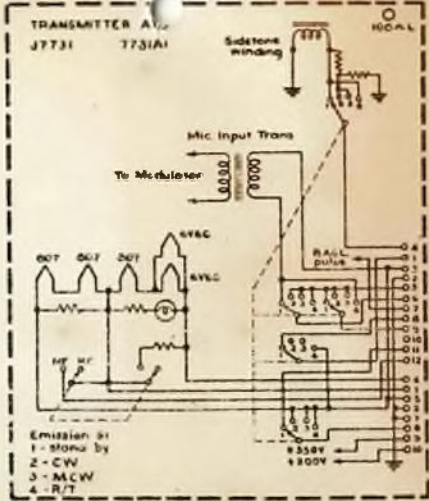
773406

Q. R. O. M.

AMALGAMATED WIRELESS
AUSTRALASIA LTD. SYDNEY

TYPE H734
D.N. 773406





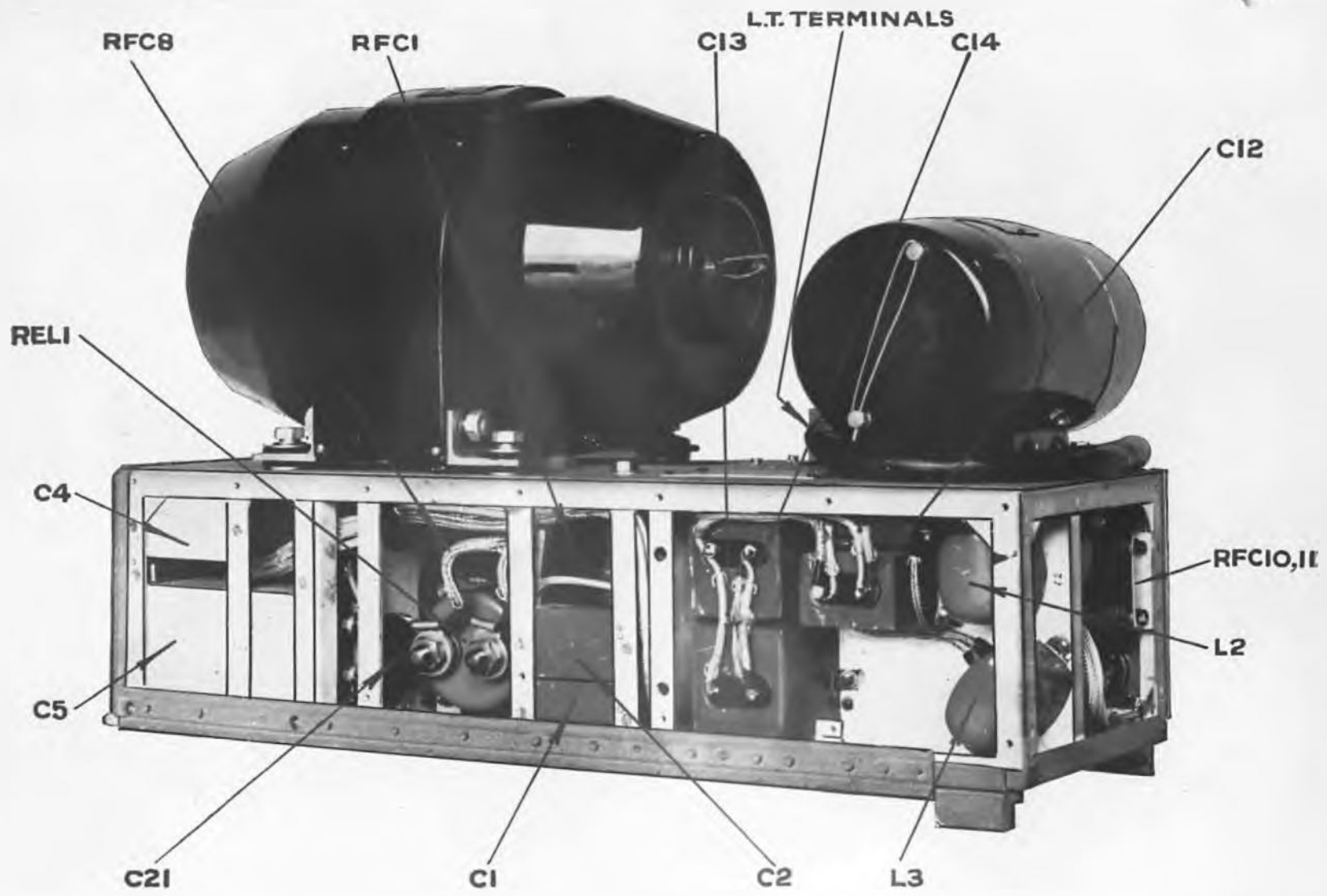
- NOTES**
- 1 When remote control unit is fitted no change in wiring is necessary
 - 2 When pulse generator is not fitted link tags 2 & 7 on pulse outlet
 - 3 Connection code for Plug Y104/00007, Terminal Connecting Cable F



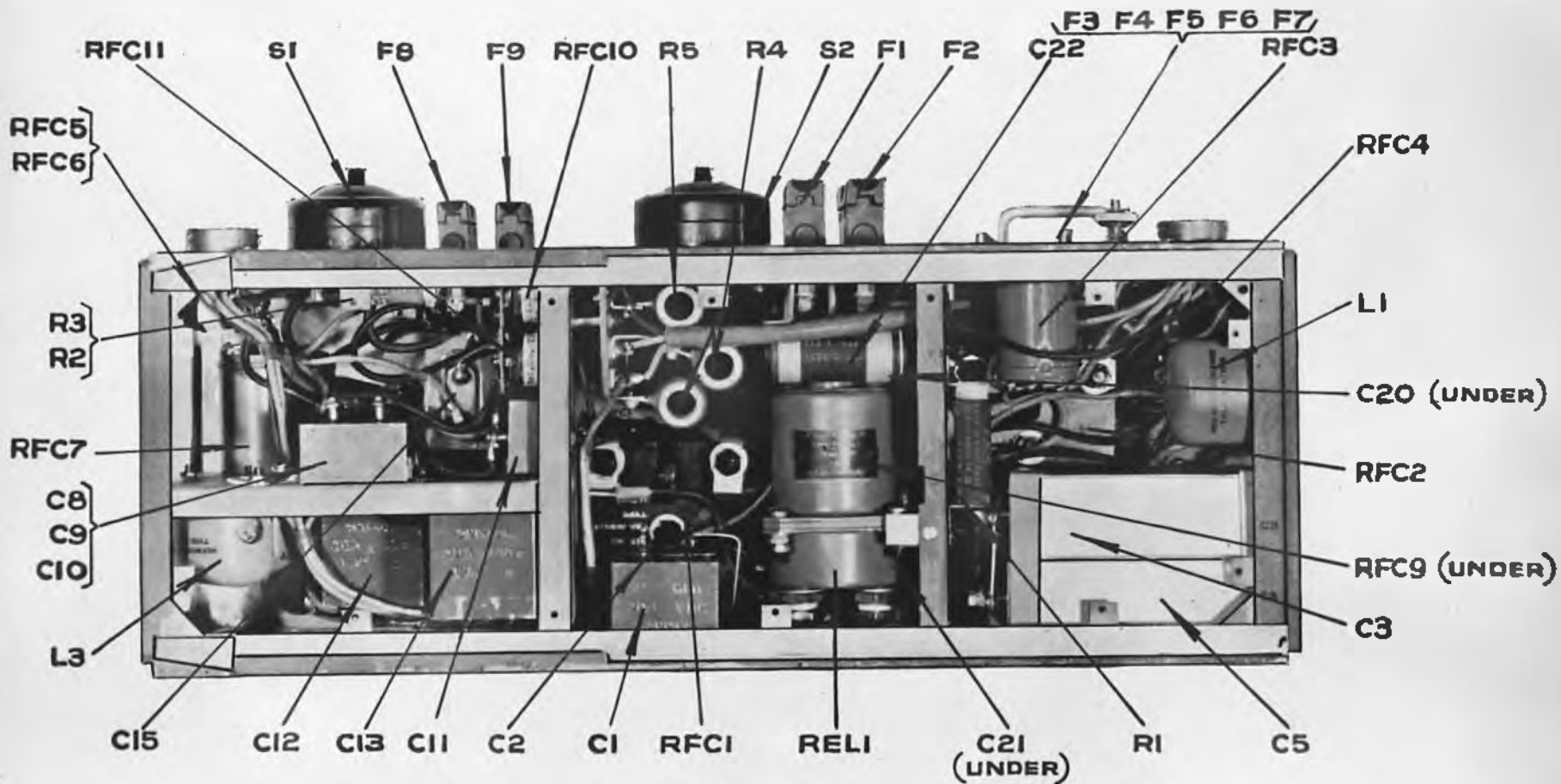
Connection Side of Plug Shown
Pin 1 Tel., Pin 2 & 4 Tel. Pin 3 Key, Pin 7 Key.
Pin 6 - Mic, Pin 8 - Mic. Numbers indicate leads of Cable F which connect to pin positions shown.

7730C3
DATE 10.12.51
CHANGES
Reasons & M. added
Previously Dwg. W7730A1
A.J./S. 10.12.51 1 3
Cable F plug attach
Incl. Clad. Wp.
To 2, 12, 14

AMALGAMATED WIRELESS (AUSTRALASIA) LTD. - SYDNEY		REP. <i>M. J. J.</i>	IN SHEET
INTERWIRING SCHEMATIC DIAGRAM		DES. <i>C. J. J.</i>	REF.
ATS ARB AIRCRAFT EQUIPMENT		INCR. <i>K. P. J.</i>	TYPE J7730
		CHKD. <i>R. F. J.</i>	DWG. 7730C3
		APP. <i>R. J. J.</i>	



UNIT POWER SUPPLY
PHOTO N° 1706 (Ref. also 1696)

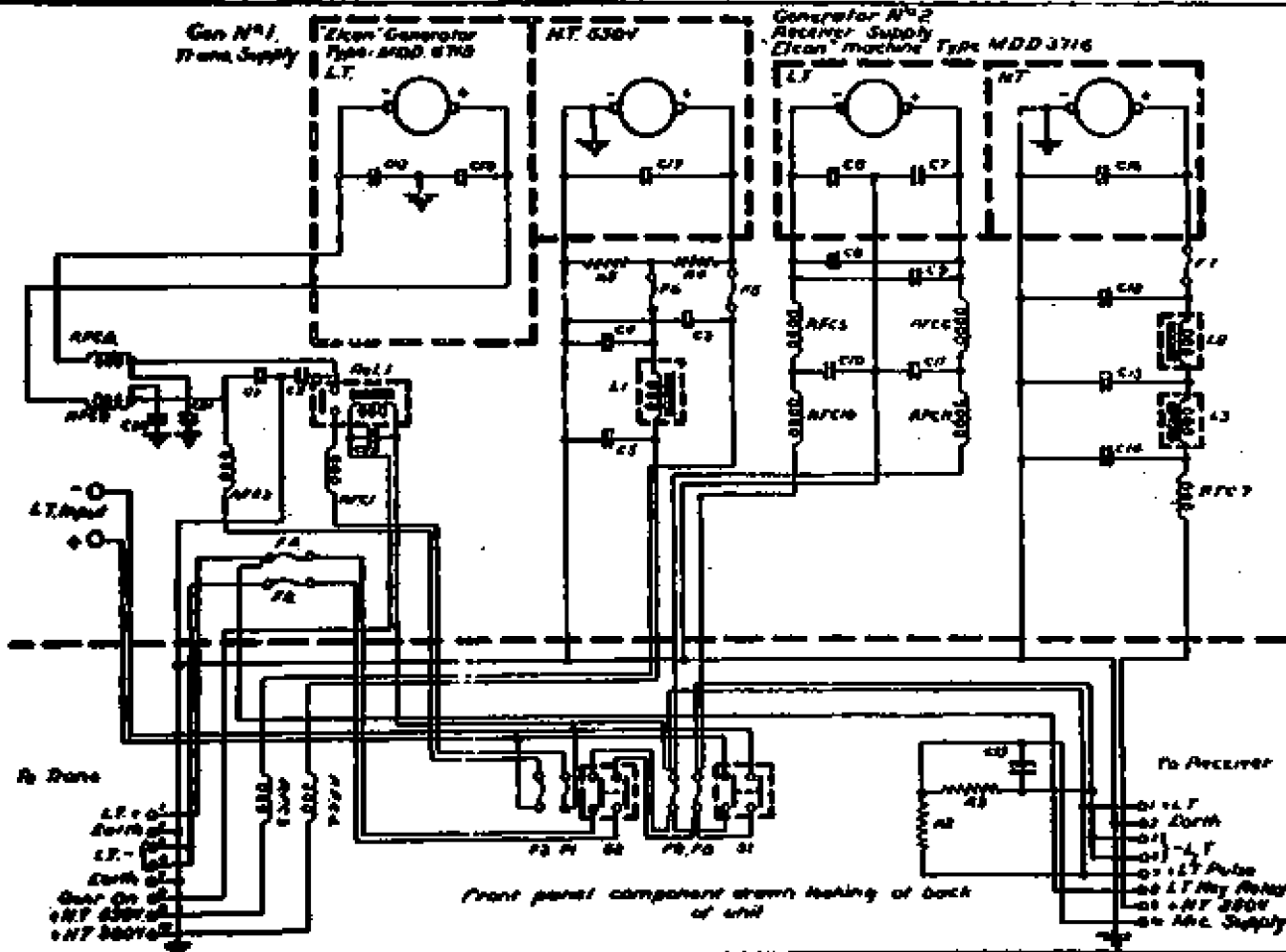


UNIT POWER SUPPLY

PHOTO N° 1813 (Ref. also 1706)

773409

REVISED	DATE
1	12-8-43
CHANGES	



Front panel component drawn looking of back of unit

AMALGAMATED WIRELESS
(AUSTRALASIAN) LTD. STONEY
CREEK

SCHEMATIC DIAGRAM
POWER SUPPLY UNIT.
IN OPERATION.

1	2	3	4	5	6	7	8	9	10	11	12	13	14	15	16	17	18	19	20	21	22	23	24	25	26	27	28	29	30	31	32	33	34	35	36	37	38	39	40	41	42	43	44	45	46	47	48	49	50
---	---	---	---	---	---	---	---	---	----	----	----	----	----	----	----	----	----	----	----	----	----	----	----	----	----	----	----	----	----	----	----	----	----	----	----	----	----	----	----	----	----	----	----	----	----	----	----	----	----

TYPE 1H7734
DNR 773409

① M.F. Oscillator Range
Switch and Tuning
140 - 185 kc.
185 - 260
260 - 370
370 - 500

② H.F. Range Selector

③ M.F. H.F. Channel
Selector Switches

④ H.F. Buffer Range.
2 - 5 M.C.
5 - 10 M.c.

⑤ H.F. P.A. Range Switch
and Tuning.
2 - 3.5 Mc.
3.5 - 6.5
6.5 - 10
10 - 20 M.c.

⑥ M.F. P.A. Range Switch
and Tuning.
140 - 180 k.c.
180 - 290
290 - 500

⑦ H.F. Aerial Tuning

⑧ H.F. Aerial Coupling.

⑨ M.F. Aerial Tuning

⑩ M.F. Aerial Coupling

⑪ Meter Switch.

⑫ Operators functional
Control Switch

⑬ H.F. Osc. Ranges and
Crystal selector
2 - 5 Mc.

⑭ Plug in crystals
mount behind
hinged cover

⑮ Beat Osc. Tuning

⑯ Tone Control and
intertuning switch

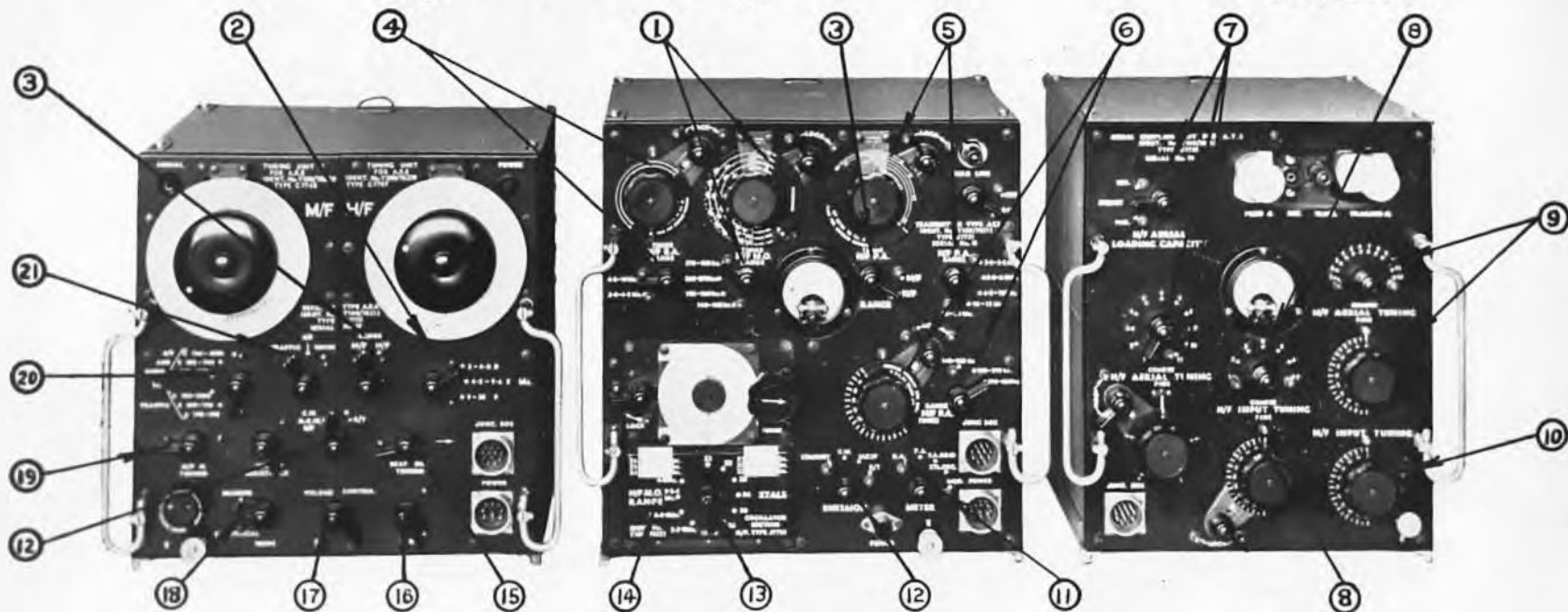
⑰ Volume Control

⑱ Bearing reciprocal
switch

⑲ M.F. Aerial Tuning
Cond.

⑳ M.F. Range
Selector Switch

㉑ D.F. Traffic
Selector

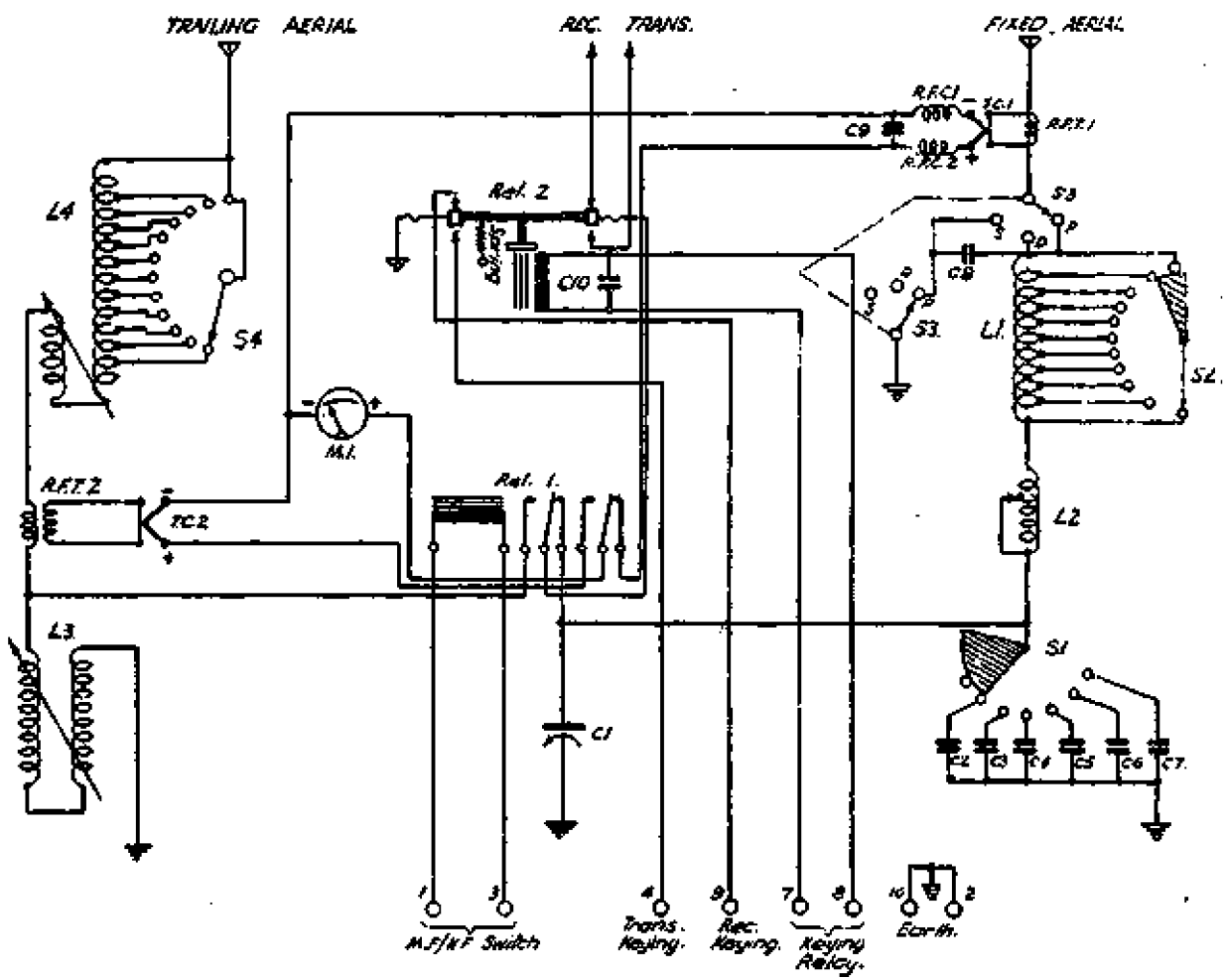


RECEIVER

TRANSMITTER

AERIAL COUPLING UNIT

PHOTO N° 1776



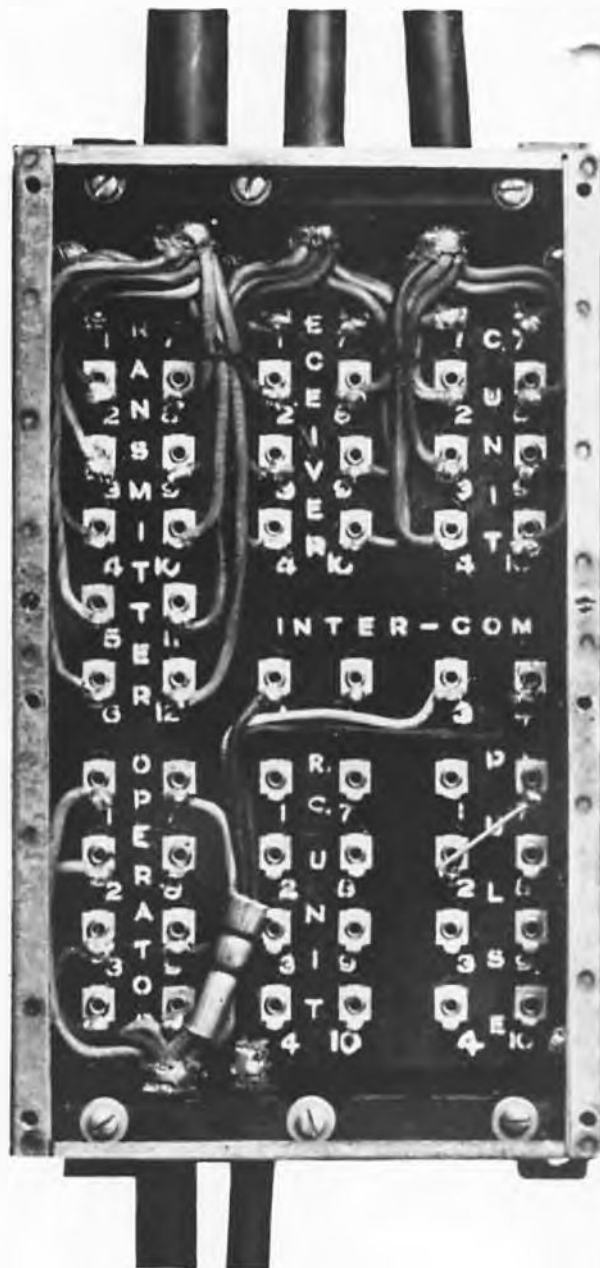
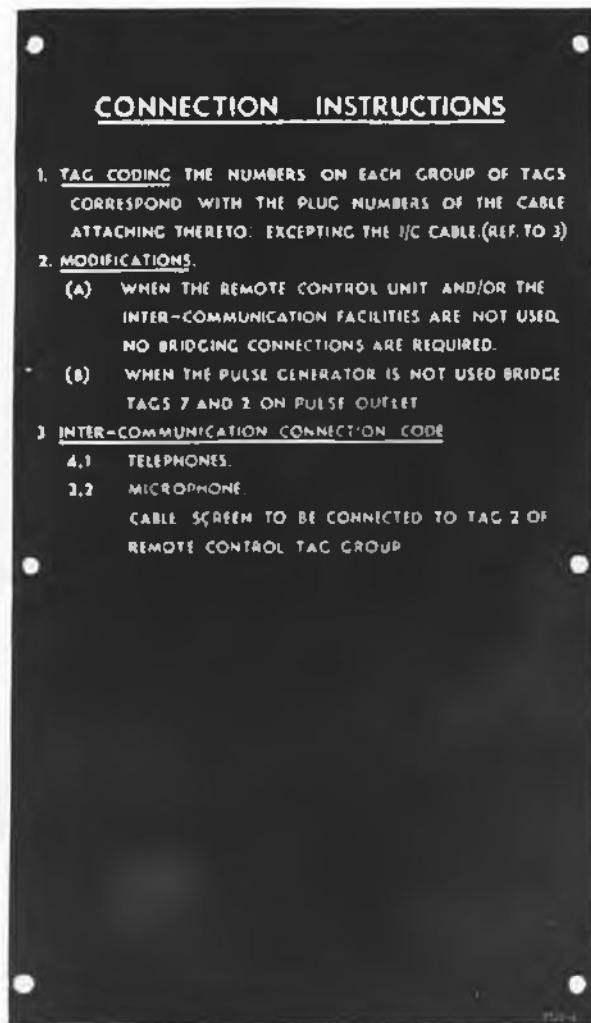
AMALGAMATED WIRELESS
 AUSTRALASIA, LTD. - SYDNEY

**SCHEMATIC DIAGRAM
 AERIAL COUPLING UNIT.**

REF.	DESIGN	DATE	BY
REV.	REVISION	DATE	BY
APP.	APPROVED	DATE	BY

TYPE J7732

DWG. 7732D13



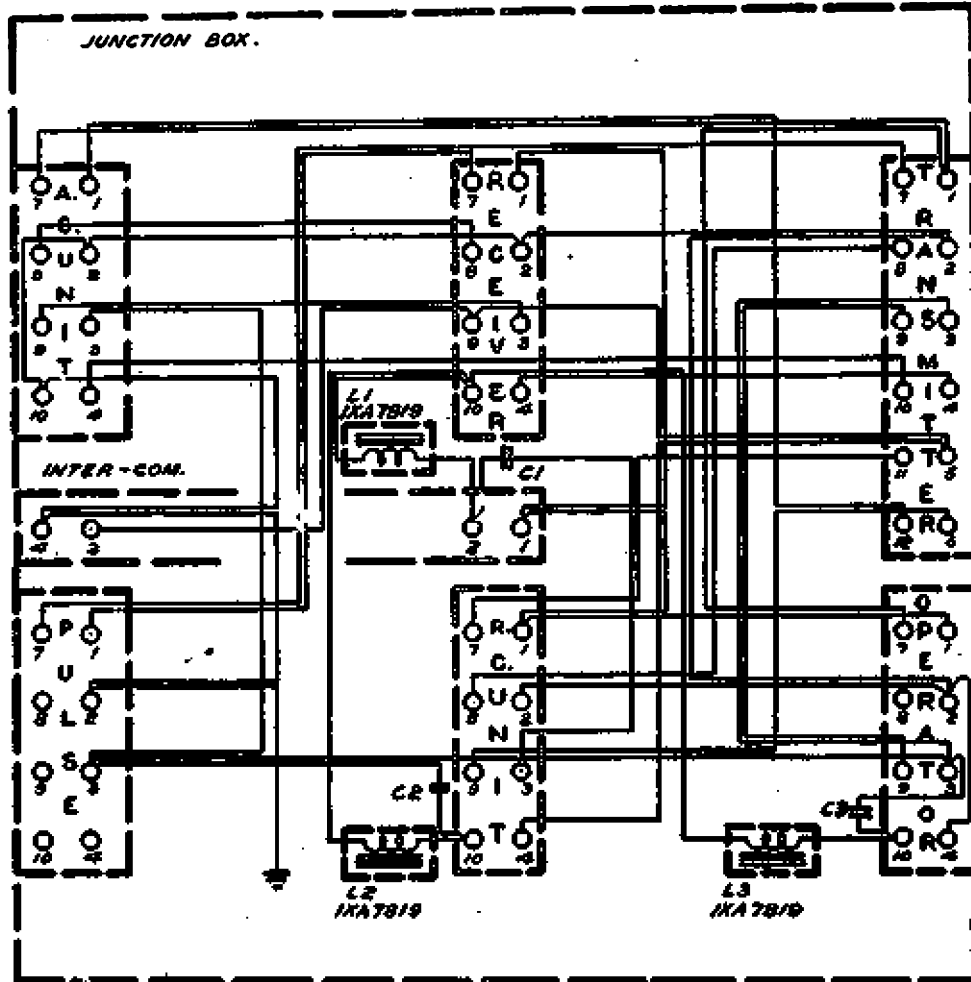
Top view showing inside of cover.

JUNCTION BOX

PHOTO N° 1709 (Ref. also 1705)

7735DI

18 12 41



NOTE:-
Wiring side of terminal panel shown.

AMALGAMATED WIRELESS (AUSTRALASIA: LTD. - SYDNEY)	REF 4467	1/21 1/21
	SCHEMATIC DIAGRAM JUNCTION BOX	TYPE 7735 DWG. 7735DI